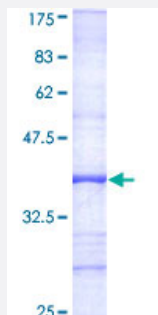


STK10 (Human) Recombinant Protein (Q01)

Catalog # H00006793-Q01

Size 25 ug, 10 ug

Applications



Specification

| | |
|--------------------------------------|---|
| Product Description | Human STK10 partial ORF (AAH14413, 1 a.a. - 110 a.a.) recombinant protein with GST-tag at N-terminal. |
| Sequence | MASFLLFSQFAFHLRQSLVYVGGGDRGKREAEMFILLPCFMPSRVPLPAHGCECTHIRVHTGLG LLAWPLLPRWVGTRLLPEPVPLSMLGGAVGVARAGCWRRRHGKAQ |
| Host | Wheat Germ (in vitro) |
| Theoretical MW (kDa) | 37.73 |
| Interspecies Antigen Sequence | Mouse (54); Rat (54) |
| Preparation Method | in vitro wheat germ expression system |
| Purification | Glutathione Sepharose 4 Fast Flow |
| Quality Control Testing | 12.5% SDS-PAGE Stained with Coomassie Blue. |
| Storage Buffer | 50 mM Tris-HCl, 10 mM reduced Glutathione, pH=8.0 in the elution buffer. |
| Storage Instruction | Store at -80°C. Aliquot to avoid repeated freezing and thawing. |
| Note | Best use within three months from the date of receipt of this protein. |

Applications

- Enzyme-linked Immunoabsorbent Assay
- Western Blot (Recombinant protein)
- Antibody Production
- Protein Array

Gene Info — STK10

Entrez GeneID [6793](#)

GeneBank Accession# [BC014413](#)

Protein Accession# [AAH14413](#)

Gene Name STK10

Gene Alias LOK, PRO2729

Gene Description serine/threonine kinase 10

Omim ID [603919](#)

Gene Ontology [Hyperlink](#)

Gene Summary This gene encodes a member of the Ste20 family of serine/threonine protein kinases, and is similar to several known polo-like kinase kinases. The protein can associate with and phosphorylate polo-like kinase 1, and overexpression of a kinase-dead version of the protein interferes with normal cell cycle progression. The kinase can also negatively regulate interleukin 2 expression in T-cells via the mitogen activated protein kinase kinase 1 pathway. [provided by RefSeq]

Other Designations lymphocyte-oriented kinase

Disease

- [Tobacco Use Disorder](#)