

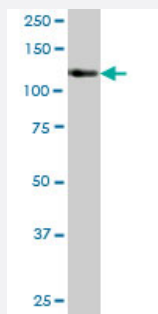
MaxPab®

# STK10 purified MaxPab mouse polyclonal antibody (B01P)

Catalog # H00006793-B01P

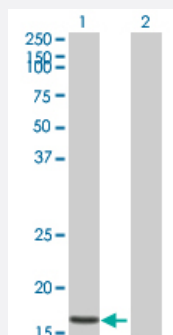
Size 50 ug

## Applications



### Western Blot (Tissue lysate)

STK10 MaxPab polyclonal antibody. Western Blot analysis of STK10 expression in human pancreas.



### Western Blot (Transfected lysate)

Western Blot analysis of STK10 expression in transfected 293T cell line ([H00006793-T01](#)) by STK10 MaxPab polyclonal antibody.

Lane 1: STK10 transfected lysate(15.95 KDa).

Lane 2: Non-transfected lysate.

## Specification

|                     |  |
|---------------------|--|
| Product Description | Mouse polyclonal antibody raised against a full-length human STK10 protein.  |
| Immunogen           | STK10 (AAH14413, 12 a.a. ~ 144 a.a) full-length human protein.   |
| Sequence            | FHLRQSLVYVGGGDRGKREAEMFILLPCFMPSRVPLPAHGCECTHIRVHTGLGLLAWPLLPRWV<br>GTRLLPEPVPLSMLGGAVGVARAGCWHRRHGKAQAVLPGCDACWPPHRLLCAGTDSSAHEAS<br>TTQSAP |
| Host                | Mouse  |
| Reactivity          | Human  |

|                               |  |
|-------------------------------|--|
| Interspecies Antigen Sequence | Mouse (54); Rat (54)   |
| Quality Control Testing       | Antibody reactive against mammalian transfected lysate.                  |
| Storage Buffer                | In 1x PBS, pH 7.4  |
| Storage Instruction           | Store at -20°C or lower. Aliquot to avoid repeated freezing and thawing. |

## Applications

- Western Blot (Tissue lysate)

STK10 MaxPab polyclonal antibody. Western Blot analysis of STK10 expression in human pancreas.

[Protocol Download](#)

- Western Blot (Transfected lysate)

Western Blot analysis of STK10 expression in transfected 293T cell line ([H00006793-T01](#)) by STK10 MaxPab polyclonal antibody.

Lane 1: STK10 transfected lysate(15.95 KDa).

Lane 2: Non-transfected lysate.

[Protocol Download](#)

## Gene Info — STK10

|                     |                            |
|---------------------|----------------------------|
| Entrez GeneID       | <a href="#">6793</a>       |
| GeneBank Accession# | <a href="#">BC014413</a>   |
| Protein Accession#  | -                          |
| Gene Name           | STK10                      |
| Gene Alias          | LOK, PRO2729               |
| Gene Description    | serine/threonine kinase 10 |
| Omim ID             | <a href="#">603919</a>     |
| Gene Ontology       | <a href="#">Hyperlink</a>  |

**Gene Summary**

This gene encodes a member of the Ste20 family of serine/threonine protein kinases, and is similar to several known polo-like kinase kinases. The protein can associate with and phosphorylate polo-like kinase 1, and overexpression of a kinase-dead version of the protein interferes with normal cell cycle progression. The kinase can also negatively regulate interleukin 2 expression in T-cells via the mitogen activated protein kinase kinase 1 pathway. [provided by RefSeq]

**Other Designations**

lymphocyte-oriented kinase

**Disease**

- [Tobacco Use Disorder](#)