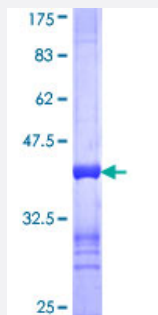


STK4 (Human) Recombinant Protein (Q01)

Catalog # H00006789-Q01

Size 25 ug, 10 ug

Applications



Specification

Product Description	Human STK4 partial ORF (NP_006273, 391 a.a. - 485 a.a.) recombinant protein with GST-tag at N-terminal.
Sequence	AKPSFLEYFEQKEKENQINSFGKSVPGLKNSSDWKIPQDGDYEFKSWTVEDLQKRLLALDPM MEQEIEEIRQKYQSKRQPILDAIEAKKRRQQ
Host	Wheat Germ (in vitro)
Theoretical MW (kDa)	36.19
Interspecies Antigen Sequence	Mouse (95); Rat (94)
Preparation Method	in vitro wheat germ expression system
Purification	Glutathione Sepharose 4 Fast Flow
Quality Control Testing	12.5% SDS-PAGE Stained with Coomassie Blue.
Storage Buffer	50 mM Tris-HCl, 10 mM reduced Glutathione, pH=8.0 in the elution buffer.
Storage Instruction	Store at -80°C. Aliquot to avoid repeated freezing and thawing.
Note	Best use within three months from the date of receipt of this protein.

Applications

- Enzyme-linked Immunoabsorbent Assay
- Western Blot (Recombinant protein)
- Antibody Production
- Protein Array

Gene Info — STK4

Entrez GeneID [6789](#)

GeneBank Accession# [NM_006282](#)

Protein Accession# [NP_006273](#)

Gene Name STK4

Gene Alias DKFZp686A2068, KRS2, MST1, YSK3

Gene Description serine/threonine kinase 4

Omim ID [604965](#)

Gene Ontology [Hyperlink](#)

Gene Summary The protein encoded by this gene is a cytoplasmic kinase that is structurally similar to the yeast Ste20p kinase, which acts upstream of the stress-induced mitogen-activated protein kinase cascade. The encoded protein can phosphorylate myelin basic protein and undergoes autophosphorylation. A caspase-cleaved fragment of the encoded protein has been shown to be capable of phosphorylating histone H2B. The particular phosphorylation catalyzed by this protein has been correlated with apoptosis, and it's possible that this protein induces the chromatin condensation observed in this process. [provided by RefSeq]

Other Designations OTTHUMP00000043418|dJ211D12.2 (serine/threonine kinase 4 (MST1, KRS2))|kinase responsive to stress 2|mammalian sterile 20-like 1|yeast Ste20-like

Pathway

- [MAPK signaling pathway](#)
- [Non-small cell lung cancer](#)

- [Pathways in cancer](#)

Disease

- [Kidney Failure](#)
- [Tobacco Use Disorder](#)