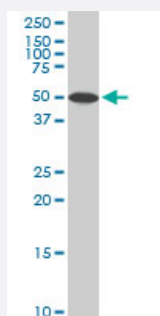


# STK4 monoclonal antibody (M02), clone 4F4

Catalog # H00006789-M02

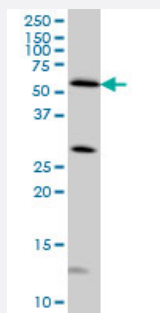
Size 100 ug

## Applications



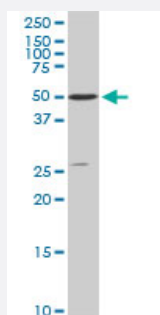
### Western Blot (Cell lysate)

STK4 monoclonal antibody (M02), clone 4F4. Western Blot analysis of STK4 expression in Raw 264.7 ( Cat # L024V1 ).



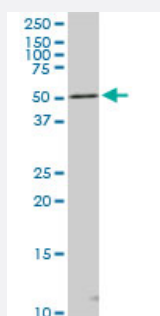
### Western Blot (Cell lysate)

STK4 monoclonal antibody (M02), clone 4F4 Western Blot analysis of STK4 expression in HeLa ( Cat # L013V1 ).



### Western Blot (Cell lysate)

STK4 monoclonal antibody (M02), clone 4F4. Western Blot analysis of STK4 expression in PC-12 ( Cat # L012V1 ).

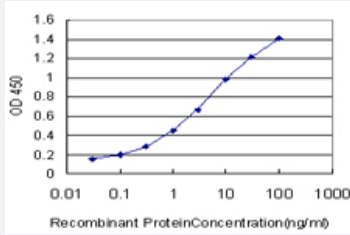


### Western Blot (Cell lysate)

STK4 monoclonal antibody (M02), clone 4F4. Western Blot analysis of STK4 expression in NIH/3T3 ( Cat # L018V1 ).

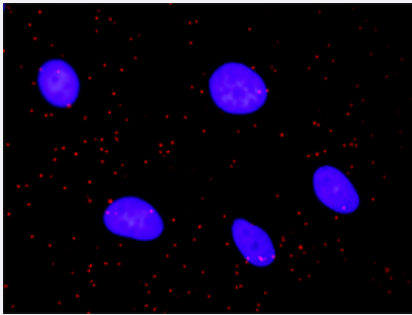
## Sandwich ELISA (Recombinant protein)

Detection limit for recombinant GST tagged STK4 is approximately 0.1ng/ml as a capture antibody.



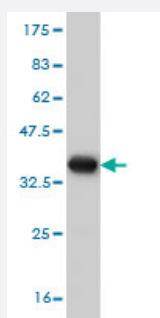
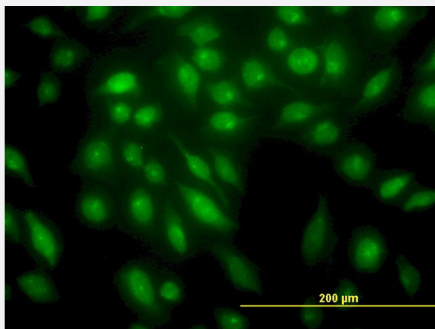
## In situ Proximity Ligation Assay (Cell)

Proximity Ligation Analysis of protein-protein interactions between TP53 and STK4. HeLa cells were stained with anti-TP53 rabbit purified polyclonal 1:1200 and anti-STK4 mouse monoclonal antibody 1:50. Each red dot represents the detection of protein-protein interaction complex, and nuclei were counterstained with DAPI (blue).



## Immunofluorescence

Immunofluorescence of monoclonal antibody to STK4 on HeLa cell. [antibody concentration 25 ug/ml]



Western Blot detection against Immunogen (36.19 KDa) .

## Specification

### Product Description

Mouse monoclonal antibody raised against a partial recombinant STK4.

### Immunogen

STK4 (NP\_006273, 391 a.a. ~ 485 a.a) partial recombinant protein with GST tag. MW of the GST tag alone is 26 KDa.

Sequence	AKPSFLEYFEQKEKENQINSFGKSVPGPLKNSSDWKIPQDGDYEFLLKSWTVEDLQKRLLALDPM MEQEIEEIRQKYQSKRQPILDAIEAKRRRQQ
Host	Mouse
Reactivity	Human, Mouse, Rat
Interspecies Antigen Sequence	Mouse (95); Rat (94)
Isotype	IgG2a Kappa
Quality Control Testing	Antibody Reactive Against Recombinant Protein. Western Blot detection against Immunogen (36.19 KDa) .
Storage Buffer	In 1x PBS, pH 7.4
Storage Instruction	Store at -20°C or lower. Aliquot to avoid repeated freezing and thawing.

## Applications

- Western Blot (Cell lysate)

STK4 monoclonal antibody (M02), clone 4F4. Western Blot analysis of STK4 expression in Raw 264.7 ( Cat # L024V1 ).

[Protocol Download](#)

- Western Blot (Cell lysate)

STK4 monoclonal antibody (M02), clone 4F4 Western Blot analysis of STK4 expression in HeLa ( Cat # L013V1 ).

[Protocol Download](#)

- Western Blot (Cell lysate)

STK4 monoclonal antibody (M02), clone 4F4. Western Blot analysis of STK4 expression in PC-12 ( Cat # L012V1 ).

[Protocol Download](#)

- Western Blot (Cell lysate)

STK4 monoclonal antibody (M02), clone 4F4. Western Blot analysis of STK4 expression in NIH/3T3 ( Cat # L018V1 ).

[Protocol Download](#)

- Western Blot (Recombinant protein)

[Protocol Download](#)

- Sandwich ELISA (Recombinant protein)

Detection limit for recombinant GST tagged STK4 is approximately 0.1ng/ml as a capture antibody.

[Protocol Download](#)

- ELISA

- *In situ* Proximity Ligation Assay (Cell)

Proximity Ligation Analysis of protein-protein interactions between TP53 and STK4. HeLa cells were stained with anti-TP53 rabbit purified polyclonal 1:1200 and anti-STK4 mouse monoclonal antibody 1:50. Each red dot represents the detection of protein-protein interaction complex, and nuclei were counterstained with DAPI (blue).

- Immunofluorescence

Immunofluorescence of monoclonal antibody to STK4 on HeLa cell. [antibody concentration 25 ug/ml]

## Gene Info — STK4

Entrez GeneID [6789](#)

GeneBank Accession# [NM\\_006282](#)

Protein Accession# [NP\\_006273](#)

Gene Name STK4

Gene Alias DKFZp686A2068, KRS2, MST1, YSK3

Gene Description serine/threonine kinase 4

Omim ID [604965](#)

Gene Ontology [Hyperlink](#)

**Gene Summary** The protein encoded by this gene is a cytoplasmic kinase that is structurally similar to the yeast Ste20p kinase, which acts upstream of the stress-induced mitogen-activated protein kinase cascade. The encoded protein can phosphorylate myelin basic protein and undergoes autophosphorylation. A caspase-cleaved fragment of the encoded protein has been shown to be capable of phosphorylating histone H2B. The particular phosphorylation catalyzed by this protein has been correlated with apoptosis, and it's possible that this protein induces the chromatin condensation observed in this process. [provided by RefSeq]

**Other Designations** OTTHUMP00000043418|dJ211D12.2 (serine/threonine kinase 4 (MST1, KRS2))|kinase responsive to stress 2|mammalian sterile 20-like 1|yeast Ste20-like

## Pathway

- [MAPK signaling pathway](#)
- [Non-small cell lung cancer](#)
- [Pathways in cancer](#)

## Disease

- [Kidney Failure](#)
- [Tobacco Use Disorder](#)