

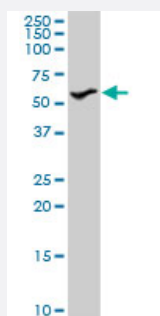
MaxPab®

STK3 purified MaxPab rabbit polyclonal antibody (D01P)

Catalog # H00006788-D01P

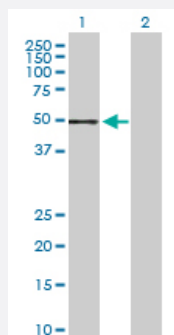
Size 100 ug

Applications



Western Blot (Cell lysate)

STK3 MaxPab rabbit polyclonal antibody. Western Blot analysis of STK3 expression in A-431.

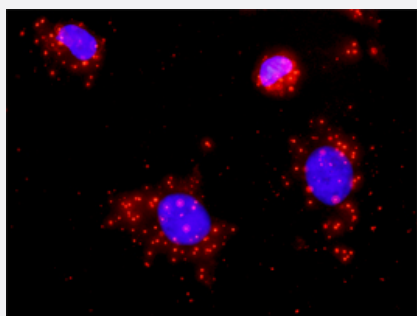


Western Blot (Transfected lysate)

Western Blot analysis of STK3 expression in transfected 293T cell line ([H00006788-T03](#)) by STK3 MaxPab polyclonal antibody.

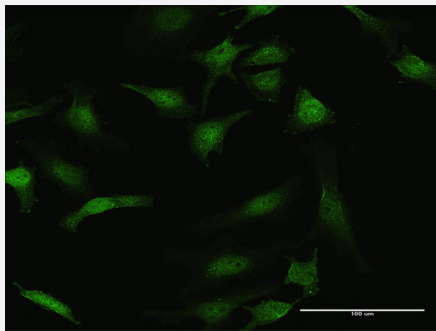
Lane 1: STK3 transfected lysate(56.30 KDa).

Lane 2: Non-transfected lysate.



In situ Proximity Ligation Assay (Cell)

Proximity Ligation Analysis of protein-protein interactions between STK3 and CASP3. HeLa cells were stained with anti-STK3 rabbit purified polyclonal 1:1200 and anti-CASP3 mouse monoclonal antibody 1:50. Each red dot represents the detection of protein-protein interaction complex, and nuclei were counterstained with DAPI (blue).



Immunofluorescence

Immunofluorescence of purified MaxPab antibody to STK3 on HeLa cell.
[antibody concentration 10 ug/ml]

Specification

Product Description	Rabbit polyclonal antibody raised against a full-length human STK3 protein.
Immunogen	STK3 (NP_006272.2, 1 a.a. ~ 491 a.a) full-length human protein.
Sequence	MEQPPAPKSKLKKLSEDSLTKQPEEVFDVLEKLGEESYGSVFKAIHKESGQVVAIKQVPVESDL QEIIKEISIMQQCDSPYVVKYYGSYFKNTDLWVMEYCGAGSVSDIIRLRNKTLIEDEIATILKSTLKGLE YLHFMRKIHRDIKAGNILLNTEGHAKLADFGVAGQLTDTMAKRNTVIGTPFWMAPEVIQEIGYNCVA DIWSLGITSIEMAEGKPPYADIHPMRAIFMIPTNPPPTFRKPELWSDDFTDFVKKCLVKNPQRATA TQLLQHPPFIKNAKPVSILRDLITEAMEIKAKRHEEQQRELEEEENSDEDELDSTMTVKTSSVESVG TMRATSTMSEGAQTMIEHNSTMLES DLGTMVINSEDEEEEDGTMKR NATSPQVQRPSFMDYFDK QDFKNKSHENCNQNMHEPFPM SKNVFPDNWKVPQDGD FDFLKNLSLEELQMRLKALDPMMER EIEELRQRYTAKRQPILDAMDAKKRRQQNF
Host	Rabbit
Reactivity	Human
Quality Control Testing	Antibody reactive against mammalian transfected lysate.
Storage Buffer	In 1x PBS, pH 7.4
Storage Instruction	Store at -20°C or lower. Aliquot to avoid repeated freezing and thawing.

Applications

- Western Blot (Cell lysate)

STK3 MaxPab rabbit polyclonal antibody. Western Blot analysis of STK3 expression in A-431.

[Protocol Download](#)

- Western Blot (Transfected lysate)

Western Blot analysis of STK3 expression in transfected 293T cell line ([H00006788-T03](#)) by STK3 MaxPab polyclonal antibody.

Lane 1: STK3 transfected lysate(56.30 KDa).

Lane 2: Non-transfected lysate.

[Protocol Download](#)

- In situ* Proximity Ligation Assay (Cell)

Proximity Ligation Analysis of protein-protein interactions between STK3 and CASP3. HeLa cells were stained with anti-STK3 rabbit purified polyclonal 1:1200 and anti-CASP3 mouse monoclonal antibody 1:50. Each red dot represents the detection of protein-protein interaction complex, and nuclei were counterstained with DAPI (blue).

- Immunofluorescence

Immunofluorescence of purified MaxPab antibody to STK3 on HeLa cell. [antibody concentration 10 ug/ml]

Gene Info — STK3

Entrez GeneID [6788](#)

GeneBank Accession# [NM_006281.2](#)

Protein Accession# [NP_006272.2](#)

Gene Name STK3

Gene Alias FLJ90748, KRS1, MST2

Gene Description serine/threonine kinase 3 (STE20 homolog, yeast)

Omim ID [605030](#)

Gene Ontology [Hyperlink](#)

Gene Summary Protein kinase activation is a frequent response of cells to treatment with growth factors, chemical s, heat shock, or apoptosis-inducing agents. This protein kinase activation presumably allows cell s to resist unfavorable environmental conditions. The yeast 'sterile 20' (Ste20) kinase acts upstrea m of the mitogen-activated protein kinase (MAPK) cascade that is activated under a variety of str ess conditions. MST2 was identified as a kinase that is activated by the proapoptotic agents stra urosporine and FAS ligand (MIM 134638) (Taylor et al., 1996 [PubMed 8816758]; Lee et al., 200 1 [PubMed 11278283]).[supplied by OMIM

Other Designations serine/threonine kinase 3 (Ste20, yeast homolog)

Pathway

- [MAPK signaling pathway](#)