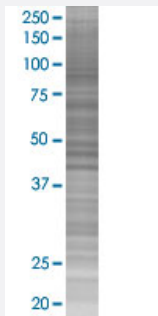


STIM1 293T Cell Transient Overexpression Lysate(Denatured)

Catalog # H00006786-T02

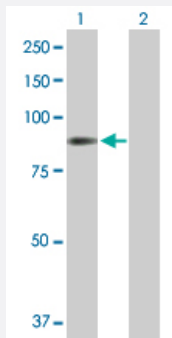
Size 100 uL

Applications



SDS-PAGE Gel

STIM1 transfected lysate.



Western Blot

Lane 1: STIM1 transfected lysate (77.40 KDa)

Lane 2: Non-transfected lysate.

Specification

Transfected Cell Line 293T

Plasmid pCMV-STIM1 full-length

Host Human

Theoretical MW (kDa) 77.4

Quality Control Testing Transient overexpression cell lysate was tested with Anti-STIM1 antibody ([H00006786-B01](#)) by Western Blots.
SDS-PAGE Gel
STIM1 transfected lysate.
Western Blot
Lane 1: STIM1 transfected lysate (77.40 KDa)
Lane 2: Non-transfected lysate.

Storage Buffer

1X Sample Buffer (50 mM Tris-HCl, 2% SDS, 10% glycerol, 300 mM 2-mercaptoethanol, 0.01% Bromophenol blue)

Storage Instruction

Store at -80°C. Aliquot to avoid repeated freezing and thawing.

Applications

- Western Blot

Gene Info — STIM1

Entrez GeneID[6786](#)**GeneBank Accession#**[NM_003156](#)**Protein Accession#**[NP_003147.2](#)**Gene Name**

STIM1

Gene Alias

D11S4896E, GOK

Gene Description

stromal interaction molecule 1

Omim ID[605921](#)**Gene Ontology**[Hyperlink](#)**Gene Summary**

This gene encodes a type 1 transmembrane protein that mediates Ca^{2+} influx after depletion of intracellular Ca^{2+} stores by gating of store-operated Ca^{2+} influx channels (SOCs). It is one of several genes located in the imprinted gene domain of 11p15.5, an important tumor-suppressor gene region. Alterations in this region have been associated with the Beckwith-Wiedemann syndrome, Wilms tumor, rhabdomyosarcoma, adrenocortical carcinoma, and lung, ovarian, and breast cancer. This gene may play a role in malignancies and disease that involve this region, as well as early hematopoiesis, by mediating attachment to stromal cells. This gene is oriented in a head-to-tail configuration with the ribonucleotide reductase 1 gene (RRM1), with the 3' end of this gene situated 1.6 kb from the 5' end of the RRM1 gene

Other Designations

-