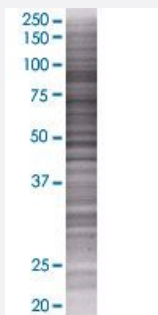


STIM1 293T Cell Transient Overexpression Lysate(Denatured)

Catalog # H00006786-T01

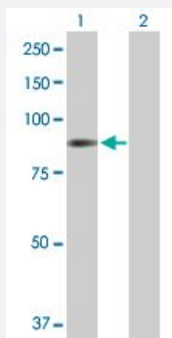
Size 100 uL

Applications



SDS-PAGE Gel

STIM1 transfected lysate.



Western Blot

Lane 1: STIM1 transfected lysate (75.46 KDa)

Lane 2: Non-transfected lysate.

Specification

Transfected Cell Line	293T
Plasmid	pCMV-STIM1 full-length
Host	Human
Theoretical MW (kDa)	75.46
Quality Control Testing	<p>Transient overexpression cell lysate was tested with Anti-STIM1 antibody (H00006786-B01) by Western Blots.</p> <p>SDS-PAGE Gel</p> <p>STIM1 transfected lysate.</p> <p>Western Blot</p> <p>Lane 1: STIM1 transfected lysate (75.46 KDa)</p> <p>Lane 2: Non-transfected lysate.</p>

Storage Buffer	1X Sample Buffer (50 mM Tris-HCl, 2% SDS, 10% glycerol, 300 mM 2-mercaptoethanol, 0.01% Bromophenol blue)
Storage Instruction	Store at -80°C. Aliquot to avoid repeated freezing and thawing.

Applications

- Western Blot

Gene Info — STIM1

Entrez GeneID	6786
GeneBank Accession#	NM_003156
Protein Accession#	NP_003147.2
Gene Name	STIM1
Gene Alias	D11S4896E, GOK
Gene Description	stromal interaction molecule 1
Omim ID	605921
Gene Ontology	Hyperlink
Gene Summary	<p>This gene encodes a type 1 transmembrane protein that mediates Ca²⁺ influx after depletion of intracellular Ca²⁺ stores by gating of store-operated Ca²⁺ influx channels (SOCs). It is one of several genes located in the imprinted gene domain of 11p15.5, an important tumor-suppressor gene region. Alterations in this region have been associated with the Beckwith-Wiedemann syndrome, Wilms tumor, rhabdomyosarcoma, adrenocortical carcinoma, and lung, ovarian, and breast cancer. This gene may play a role in malignancies and disease that involve this region, as well as early hematopoiesis, by mediating attachment to stromal cells. This gene is oriented in a head-to-tail configuration with the ribonucleotide reductase 1 gene (RRM1), with the 3' end of this gene situated 1.6 kb from the 5' end of the RRM1 gene</p>
Other Designations	-