

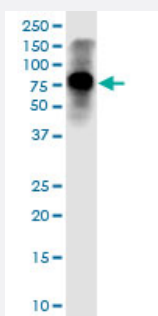
CX Grade

STIM1 monoclonal antibody (M01J), clone 5A2

Catalog # H00006786-M01J

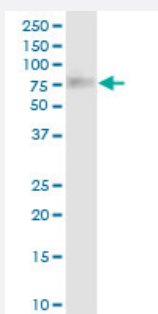
Size 100 ug

Applications



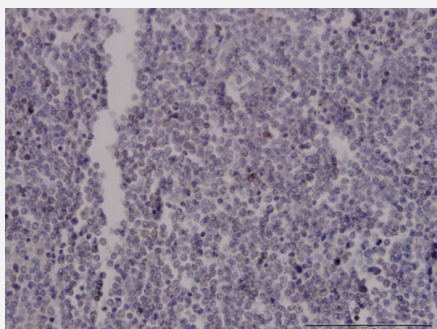
Western Blot (Tissue lysate)

STIM1 monoclonal antibody (M01J), clone 5A2. Western Blot analysis of STIM1 expression in human liver.



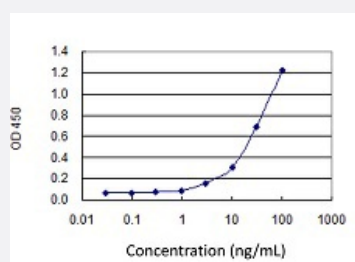
Western Blot (Tissue lysate)

STIM1 monoclonal antibody (M01J), clone 5A2. Western Blot analysis of STIM1 expression in rat testis.



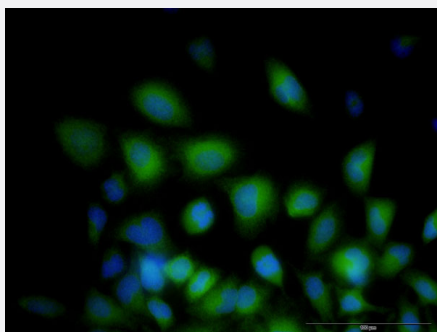
Immunohistochemistry (Formalin/PFA-fixed paraffin-embedded sections)

Immunoperoxidase of monoclonal antibody to STIM1 on formalin-fixed paraffin-embedded human malignant lymphoma, diffuse large B. [antibody concentration 3 ug/ml]



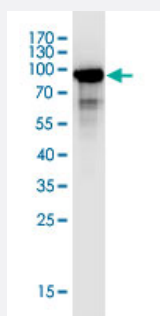
Sandwich ELISA (Recombinant protein)

Detection limit for recombinant GST tagged STIM1 is 1 ng/ml as a capture antibody.



Immunofluorescence

Immunofluorescence of monoclonal antibody to STIM1 on HeLa cell . [antibody concentration 10 ug/ml]



Western Blot detection against Immunogen (98.56 KDa) .

Specification

Product Description

Mouse monoclonal antibody raised against a full-length recombinant STIM1. This product is belong to Cell Culture Grade Antibody (CX Grade).

Immunogen

STIM1 (AAH21300, 24 a.a. ~ 685 a.a) full-length recombinant protein with GST tag. MW of the GST tag alone is 26 KDa.

Sequence

SHSHSEKATGTSSGANSEESTAAEFCDKPLCHSEDEKLSFEAVRNHKLMDDDANGDVDVEE
SDEFLREDLNYHPTVKHSTFHGEDKLISVEDLWKAWKSSEVYNWTVDEVVQWLITYVELPQYE
ETFRKLQLSGHAMPRLAVTNTTMTGAVLKMTDRSHRQKLQKALDVLFGPPLLTRHNHLKDFML
VVSIVIGVGGCWFAYIQNRYSKEHMKMMKDLEGLHRAEQSLHDLQERLHKAQEEHRTVEVEKV
HLEKKLRDEINLAKQEAQRLKELREGTENERSRQKYAEELQVREALRKAKEKESHSSWYAP
EALQKWQLTHEVEVQYNIKKQNAEKQLLVAKEGAEEKKKRNTLFGTFHVAHSSSLDDVDHKIL
TAKQALSEVTAALRERLHRWQQIEILCGFQVNNPGIHSVAALNIDPSWMGSTRPNPAHFIMTDDV
DDMDEEVSPLSMQSPSLQSSVRQRLTEPQHGLGSQRDLTHSDSESSLHMSDRQRVAPKPPQM
SRAADEALNAMTSNGSHRLIEGVHPGSLVEKLPDSPALAKKALLALNHGLDKAHSMLSPSAP
PGGSPHLDSSSRHSPSSPDPTSPVGDSRALQASRNTRIPHLAGKKAVAEEDNGSIGEETDSS
PGRKKFPLKIFKKPLKK

Host

Mouse

Reactivity

Human, Rat

Preparation Method

Cell Culture Production

Isotype

IgG2a Kappa

Quality Control Testing

Antibody Reactive Against Recombinant Protein.
Western Blot detection against Immunogen (98.56 KDa) .

Storage Buffer

In 1x PBS, pH 7.4

Storage Instruction

Store at -20°C or lower. Aliquot to avoid repeated freezing and thawing.

Applications

- Western Blot (Tissue lysate)

STIM1 monoclonal antibody (M01J), clone 5A2. Western Blot analysis of STIM1 expression in human liver.

[Protocol Download](#)

- Western Blot (Tissue lysate)

STIM1 monoclonal antibody (M01J), clone 5A2. Western Blot analysis of STIM1 expression in rat testis.

[Protocol Download](#)

- Western Blot (Recombinant protein)

[Protocol Download](#)

- Immunohistochemistry (Formalin/PFA-fixed paraffin-embedded sections)

Immunoperoxidase of monoclonal antibody to STIM1 on formalin-fixed paraffin-embedded human malignant lymphoma, diffuse large B. [antibody concentration 3 ug/ml]

[Protocol Download](#)

- Sandwich ELISA (Recombinant protein)

Detection limit for recombinant GST tagged STIM1 is 1 ng/ml as a capture antibody.

[Protocol Download](#)

- ELISA

- Immunofluorescence

Immunofluorescence of monoclonal antibody to STIM1 on HeLa cell . [antibody concentration 10 ug/ml]

Gene Info — STIM1

Entrez GeneID

[6786](#)

GeneBank Accession#	BC021300
Protein Accession#	AAH21300
Gene Name	STIM1
Gene Alias	D11S4896E, GOK
Gene Description	stromal interaction molecule 1
Omim ID	605921
Gene Ontology	Hyperlink
Gene Summary	<p>This gene encodes a type 1 transmembrane protein that mediates Ca²⁺ influx after depletion of intracellular Ca²⁺ stores by gating of store-operated Ca²⁺ influx channels (SOCs). It is one of several genes located in the imprinted gene domain of 11p15.5, an important tumor-suppressor gene region. Alterations in this region have been associated with the Beckwith-Wiedemann syndrome, Wilms tumor, rhabdomyosarcoma, adrenocortical carcinoma, and lung, ovarian, and breast cancer. This gene may play a role in malignancies and disease that involve this region, as well as early hematopoiesis, by mediating attachment to stromal cells. This gene is oriented in a head-to-tail configuration with the ribonucleotide reductase 1 gene (RRM1), with the 3' end of this gene situated 1.6 kb from the 5' end of the RRM1 gene</p>
Other Designations	-