

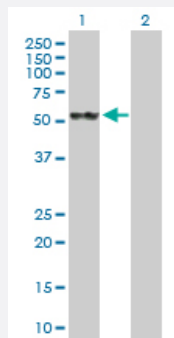
MaxPab®

# STCH purified MaxPab rabbit polyclonal antibody (D01P)

Catalog # H00006782-D01P

Size 100 ug

## Applications



### Western Blot (Transfected lysate)

Western Blot analysis of HSPA13 expression in transfected 293T cell line ([H00006782-T02](#)) by HSPA13 MaxPab polyclonal antibody.

Lane 1: STCH transfected lysate(51.90 KDa).

Lane 2: Non-transfected lysate.

## Specification

### Product Description

Rabbit polyclonal antibody raised against a full-length human STCH protein.

### Immunogen

STCH (NP\_008879.3, 1 a.a. ~ 471 a.a) full-length human protein.

### Sequence

MAREMTILGSAVLTL LLAGYLAQQYLPLTPKVI GIDL GTTYCSVG VFFPGTGKVKVIPDENGHISIPS  
MVSFTDNDVYVGYESVELADSNPQNTIYDAKRFIGKIFTAEELAEIGRYPFKVLNKNMGMEFSVTS  
NETITVSPEYVGSRL LKLKEMAEAYLGMPVANAVISVPAEFDLQQRNSTIEAANLAGLKILRVINEP  
TAAAMAYGLHKADV FHV LVIDLGGGTLDVSL LNKQGGMFLTRAMSGNNKLGQDFNQRL LQYLY  
KQYQTYGFVPSRKEEIHRLRQAVEMVKLN LTHQSAQLSVLLTVEEQDRKEPHSSDTELPKDKLS  
SADHRVNSGFGRGLSDK KSGESQVLFETEISRKLFDL NEDLFQKILVPIQQVLKEGHLEKTEID  
EVVLVGGSTRIPRIRQVIQE FFGKDPNTSVDPDLAVVTGV AIQAGIDGGSWPLQVSALEIPNKH LQK  
TNFN

### Host

Rabbit

### Reactivity

Human

### Quality Control Testing

Antibody reactive against mammalian transfected lysate.

### Storage Buffer

In 1x PBS, pH 7.4

### Storage Instruction

Store at -20°C or lower. Aliquot to avoid repeated freezing and thawing.

## Applications

- Western Blot (Transfected lysate)

Western Blot analysis of HSPA13 expression in transfected 293T cell line ([H00006782-T02](#)) by HSPA13 MaxPab polyclonal antibody.

Lane 1: STCH transfected lysate(51.90 KDa).

Lane 2: Non-transfected lysate.

[Protocol Download](#)

## Gene Info — HSPA13

Entrez GeneID [6782](#)

GeneBank Accession# [NM\\_006948](#)

Protein Accession# [NP\\_008879.3](#)

Gene Name HSPA13

Gene Alias STCH

Gene Description heat shock protein 70kDa family, member 13

Omim ID [601100](#)

Gene Ontology [Hyperlink](#)

**Gene Summary** The protein encoded by this gene is a member of the heat shock protein 70 family and is found as associated with microsomes. Members of this protein family play a role in the processing of cytosolic and secretory proteins, as well as in the removal of denatured or incorrectly-folded proteins. The encoded protein contains an ATPase domain and has been shown to associate with a ubiquitin-like protein. [provided by RefSeq]

**Other Designations** heat shock protein 70kDa family member 13|microsomal stress 70 protein ATPase core|stress 70 protein chaperone, microsome-associated, 60kD|stress 70 protein chaperone, microsome-associated, 60kDa

## Disease

- [Genetic Predisposition to Disease](#)

- [Obesity](#)

- [Stomach Neoplasms](#)