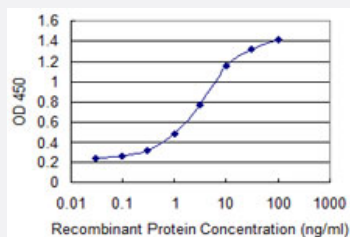


# STC1 monoclonal antibody (M02), clone 1A3

Catalog # H00006781-M02

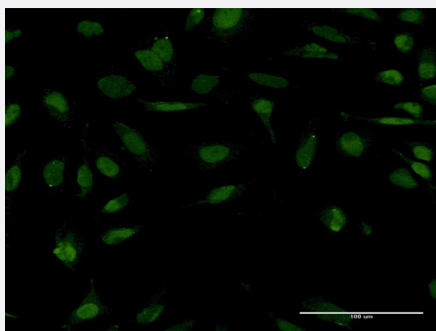
Size 100 ug

## Applications



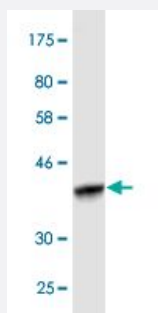
### Sandwich ELISA (Recombinant protein)

Detection limit for recombinant GST tagged STC1 is 0.1 ng/ml as a capture antibody.



### Immunofluorescence

Immunofluorescence of monoclonal antibody to STC1 on HeLa cell . [antibody concentration 10 ug/ml]



Western Blot detection against Immunogen (37.51 KDa) .

## Specification

### Product Description

Mouse monoclonal antibody raised against a partial recombinant STC1.

<b>Immunogen</b>	STC1 (AAH29044, 141 a.a. ~ 247 a.a) partial recombinant protein with GST tag. MW of the GST tag alone is 26 KDa.
<b>Sequence</b>	NPEAITEVVQLPNHFSNRYNRLVRSLLCEDEDTVSTIRDSLMEKIGPNMASLFHILQTDHCAQTHP RADFNRRRTNEPQKLKVLLRNLRGEEDSPSHIKRTSHESA
<b>Host</b>	Mouse
<b>Reactivity</b>	Human
<b>Interspecies Antigen Sequence</b>	Mouse (97); Rat (96)
<b>Isotype</b>	IgG2a Kappa
<b>Quality Control Testing</b>	Antibody Reactive Against Recombinant Protein. Western Blot detection against Immunogen (37.51 KDa) .
<b>Storage Buffer</b>	In 1x PBS, pH 7.4
<b>Storage Instruction</b>	Store at -20°C or lower. Aliquot to avoid repeated freezing and thawing.

## Applications

- Western Blot (Recombinant protein)

[Protocol Download](#)

- Sandwich ELISA (Recombinant protein)

Detection limit for recombinant GST tagged STC1 is 0.1 ng/ml as a capture antibody.

[Protocol Download](#)

- ELISA

- Immunofluorescence

Immunofluorescence of monoclonal antibody to STC1 on HeLa cell . [antibody concentration 10 ug/ml]

## Gene Info — STC1

**Entrez GeneID** [6781](#)

**GeneBank Accession#** [BC029044](#)

Protein Accession#	<a href="#">AAH29044</a>
Gene Name	STC1
Gene Alias	STC
Gene Description	stanniocalcin 1
Omim ID	<a href="#">601185</a>
Gene Ontology	<a href="#">Hyperlink</a>
Gene Summary	<p>This gene encodes a secreted, homodimeric glycoprotein that is expressed in a wide variety of tissues and may have autocrine or paracrine functions. The gene contains a 5' UTR rich in CAG trinucleotide repeats. The encoded protein contains 11 conserved cysteine residues and is phosphorylated by protein kinase C exclusively on its serine residues. The protein may play a role in the regulation of renal and intestinal calcium and phosphate transport, cell metabolism, or cellular calcium/phosphate homeostasis. Overexpression of human stanniocalcin 1 in mice produces high serum phosphate levels, dwarfism, and increased metabolic rate. This gene has altered expression in hepatocellular, ovarian, and breast cancers. [provided by RefSeq]</p>
Other Designations	-

## Disease

- [Amyotrophic lateral sclerosis](#)
- [Anoxia](#)
- [Cardiovascular Diseases](#)
- [Diabetes Mellitus](#)
- [Edema](#)
- [Genetic Predisposition to Disease](#)