

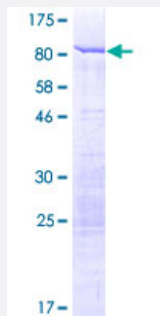
Full-Length

# STAU1 (Human) Recombinant Protein (P01)

Catalog # H00006780-P01

Size 25 ug, 10 ug

## Applications



## Specification

### Product Description

Human STAU1 full-length ORF ( NP\_059347.2, 1 a.a. - 577 a.a.) recombinant protein with GST-tag at N-terminal.

### Sequence

MSQVQVQVQNPSAALSGSQILNKNQSLLSQPLMSIPSTTSSLPSENAGRPIQNSALPSASITSTSA  
AAESITPTVELNALCMKLGKKPMYKPVDPYSRMQSTYNYNMRGGAYPPRYFYPFPVPLLYQVEL  
SVGGQQFNGKGKTRQAAKHDAALKALRILQNEPLPERLEVNGRESEENLNKSEISQVFEIALKR  
NLPVNFEVARESGPPHMKNFVTKVSVGEFVGEGEGKSKKISKKNAAIAVLEELKKLPPLPAVERV  
KPRIKKKTKPMVKPQTSPEYGGGINPISRLAQIQQAKKEKEPEYTLTTERGLPRRREFVMQVKVGNH  
TAEGTGTNKKVAKRNAENMLEILGFKVPQAQPTKPAKSEEKTPIKKPGDGRKVTFFEPGSGDE  
NGTSNKEDEFMPYLSHQQLPAGILPMVPEVAQAVGVSQGHHTKDFTRAAPNPAKATVTAMIAR  
ELLYGGTSPTAETILKNNISSGHVPHGPLTRPSEQLDYLSRVQGFQVEYKDFPKNNKNEFVSLINC  
SSQPPLISHGIGKDVESCHDMAALNILKLLSELDQQSTEMPRTGNGPMSVCGRC

### Host

Wheat Germ (in vitro)

### Theoretical MW (kDa)

89.6

### Preparation Method

[in vitro wheat germ expression system](#)

### Purification

Glutathione Sepharose 4 Fast Flow

### Quality Control Testing

12.5% SDS-PAGE Stained with Coomassie Blue.

### Storage Buffer

50 mM Tris-HCl, 10 mM reduced Glutathione, pH=8.0 in the elution buffer.

**Storage Instruction**

Store at -80°C. Aliquot to avoid repeated freezing and thawing.

**Note**

Best use within three months from the date of receipt of this protein.

## Applications

- Enzyme-linked Immunoabsorbent Assay
- Western Blot (Recombinant protein)
- Antibody Production
- Protein Array

## Gene Info — STAU1

**Entrez GeneID**[6780](#)**GeneBank Accession#**[NM\\_017453.2](#)**Protein Accession#**[NP\\_059347.2](#)**Gene Name**

STAU1

**Gene Alias**

FLJ25010, STAU

**Gene Description**

staufen, RNA binding protein, homolog 1 (Drosophila)

**Omim ID**[601716](#)**Gene Ontology**[Hyperlink](#)**Gene Summary**

Staufen is a member of the family of double-stranded RNA (dsRNA)-binding proteins involved in the transport and/or localization of mRNAs to different subcellular compartments and/or organelles. These proteins are characterized by the presence of multiple dsRNA-binding domains which are required to bind RNAs having double-stranded secondary structures. The human homologue of staufen encoded by STAU, in addition contains a microtubule-binding domain similar to that of microtubule-associated protein 1B, and binds tubulin. The STAU gene product has been shown to be present in the cytoplasm in association with the rough endoplasmic reticulum (RER), implicating this protein in the transport of mRNA via the microtubule network to the RER, the site of translation. Five transcript variants resulting from alternative splicing of STAU gene and encoding three isoforms have been described. Three of these variants encode the same isoform, however, differ in their 5'UTR. [provided by RefSeq]

**Other Designations**

OTTHUMP00000031233|OTTHUMP00000031234|OTTHUMP00000031235|OTTHUMP000000  
31236|OTTHUMP00000031238|staufen

---