

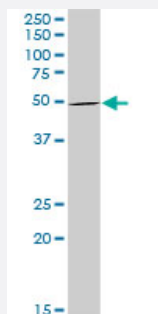
MaxPab®

STAU1 purified MaxPab rabbit polyclonal antibody (D01P)

Catalog # H00006780-D01P

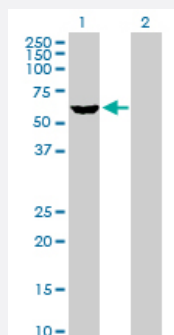
Size 100 ug

Applications



Western Blot (Tissue lysate)

STAU1 MaxPab rabbit polyclonal antibody. Western Blot analysis of STAU1 expression in human liver.



Western Blot (Transfected lysate)

Western Blot analysis of STAU1 expression in transfected 293T cell line ([H00006780-T02](#)) by STAU1 MaxPab polyclonal antibody.

Lane 1: STAU1 transfected lysate(63.20 KDa).

Lane 2: Non-transfected lysate.

Specification

Product Description

Rabbit polyclonal antibody raised against a full-length human STAU1 protein.

Immunogen

STAU1 (NP_059347.2, 1 a.a. ~ 577 a.a) full-length human protein.

Sequence	MSQVQVQVQNPSAALSGSQILNKNQSLLSQPLMSIPSTTSSLPSENAGRPIQNSALPSASITSTSA AAESITPTVELNALCMKLGKKPMYKPVDPYSRMQSTYNNMRGGAYPPRYFYPFPVPPLLYQVEL SVGGQQFNGKGKTRQAAKHDAAAKALRILQNEPLPERLEVNGRESEEEENLNKSEISQVFEIALKR NLPVNFVARESGPPHMKNFVTKVSVGEFVGEGGSKKISKKNAAIAVLEELKKLPPLPAVERV KPRIKKKTKPMVKPQTSPEYGGQINPISRLAQIQQAKKEKEPEYTLITERGLPRRREFVMQVKVGNH TAEGTGTNNKVKAKRNAAENMLEILGFKVPQAQPTKPALKSEEKTPIKKPGDGRKVTFFEPGSGDE NGTSNKEDEFMPYLSHQQLPAGILPMVPEVAQAVGVSQGHHTKDFTRAAPNPAKATVTAMIAR ELLYGGTSPTAETILKNNISSGHVPHGPLTRPSEQLDYLSRVQGFQVEYKDFPKNNKNEFVSLINC SSQPPLISHGIGKDVESCHDMAALNILKLLSELDQQSTEMPRTGNGPMSCVCGRC
Host	Rabbit
Reactivity	Human
Quality Control Testing	Antibody reactive against mammalian transfected lysate.
Storage Buffer	In 1x PBS, pH 7.4
Storage Instruction	Store at -20°C or lower. Aliquot to avoid repeated freezing and thawing.

Applications

- Western Blot (Tissue lysate)

STAU1 MaxPab rabbit polyclonal antibody. Western Blot analysis of STAU1 expression in human liver.

[Protocol Download](#)

- Western Blot (Transfected lysate)

Western Blot analysis of STAU1 expression in transfected 293T cell line ([H00006780-T02](#)) by STAU1 MaxPab polyclonal antibody.

Lane 1: STAU1 transfected lysate(63.20 KDa).

Lane 2: Non-transfected lysate.

[Protocol Download](#)

Gene Info — STAU1

Entrez GeneID	6780
GeneBank Accession#	NM_017453.2
Protein Accession#	NP_059347.2
Gene Name	STAU1

Gene Alias	FLJ25010, STAU
Gene Description	staufer, RNA binding protein, homolog 1 (Drosophila)
Omim ID	601716
Gene Ontology	Hyperlink
Gene Summary	<p>Staufen is a member of the family of double-stranded RNA (dsRNA)-binding proteins involved in the transport and/or localization of mRNAs to different subcellular compartments and/or organelles. These proteins are characterized by the presence of multiple dsRNA-binding domains which are required to bind RNAs having double-stranded secondary structures. The human homologue of staufer encoded by STAU, in addition contains a microtubule-binding domain similar to that of microtubule-associated protein 1B, and binds tubulin. The STAU gene product has been shown to be present in the cytoplasm in association with the rough endoplasmic reticulum (RER), implicating this protein in the transport of mRNA via the microtubule network to the RER, the site of translation. Five transcript variants resulting from alternative splicing of STAU gene and encoding three isoforms have been described. Three of these variants encode the same isoform, however, differ in their 5'UTR. [provided by RefSeq]</p>
Other Designations	OTTHUMP00000031233 OTTHUMP00000031234 OTTHUMP00000031235 OTTHUMP00000031236 OTTHUMP00000031238 staufer