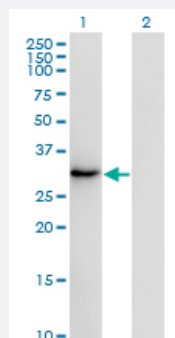


# SSX2 monoclonal antibody (M01), clone 1A4

Catalog # H00006757-M01

Size 100 ug

## Applications

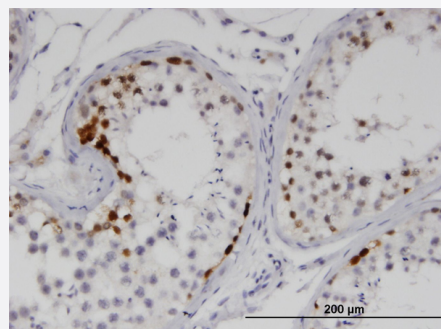


### Western Blot (Transfected lysate)

Western Blot analysis of SSX2 expression in transfected 293T cell line by SSX2 monoclonal antibody (M01), clone 1A4.

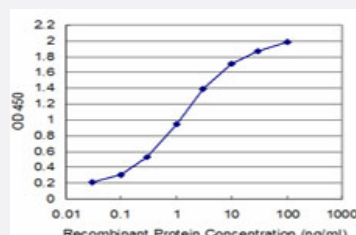
Lane 1: SSX2 transfected lysate (25.2 KDa).

Lane 2: Non-transfected lysate.



### Immunohistochemistry (Formalin/PFA-fixed paraffin-embedded sections)

Immunoperoxidase of monoclonal antibody to SSX2 on formalin-fixed paraffin-embedded human testis. [antibody concentration 1.5 ug/ml]



### Sandwich ELISA (Recombinant protein)

Detection limit for recombinant GST tagged SSX2 is approximately 0.03 ng/ml as a capture antibody.



Western Blot detection against Immunogen (50.27 KDa) .

## Specification

<b>Product Description</b>	Mouse monoclonal antibody raised against a full-length recombinant SSX2.
<b>Immunogen</b>	SSX2 (AAH02818, 1 a.a. ~ 223 a.a) full-length recombinant protein with GST tag. MW of the GST tag alone is 26 KDa.
<b>Sequence</b>	MNGDDAFARRPTVGAQIPEKIQKAFDDIAKYFSKEEWEKMKASEKIFYVYMKRKYEAMTKLGFKATLPPFMCNKRAEDFQGNLDNDPNRGNQVERPQMTFGRLLQGSPKIMPKPAEEGNDSEEVPEASGPQNDGKELCPPGKPTTSEKIHRSNGNREAQEKEERRGTAHRWSSQNTNIGRFSLSSTSMGA VHGTPTTITHNRDPKGGNMPGPTDCVRENSW
<b>Host</b>	Mouse
<b>Reactivity</b>	Human
<b>Isotype</b>	IgG2a Kappa
<b>Quality Control Testing</b>	Antibody Reactive Against Recombinant Protein. Western Blot detection against Immunogen (50.27 KDa) .
<b>Storage Buffer</b>	In 1x PBS, pH 7.4
<b>Storage Instruction</b>	Store at -20°C or lower. Aliquot to avoid repeated freezing and thawing.

## Applications

- Western Blot (Transfected lysate)

Western Blot analysis of SSX2 expression in transfected 293T cell line by SSX2 monoclonal antibody (M01), clone 1A4.

Lane 1: SSX2 transfected lysate(25.2 KDa).

Lane 2: Non-transfected lysate.

[Protocol Download](#)

- Western Blot (Recombinant protein)

[Protocol Download](#)

- Immunohistochemistry (Formalin/PFA-fixed paraffin-embedded sections)

Immunoperoxidase of monoclonal antibody to SSX2 on formalin-fixed paraffin-embedded human testis. [antibody concentration 1.5 ug/ml]

[Protocol Download](#)

- Sandwich ELISA (Recombinant protein)

Detection limit for recombinant GST tagged SSX2 is approximately 0.03ng/ml as a capture antibody.

[Protocol Download](#)

- ELISA

## Gene Info — SSX2

Entrez GeneID [6757](#)

GeneBank Accession# [BC002818](#)

Protein Accession# [AAH02818](#)

Gene Name SSX2

Gene Alias HD21, HOM-MEL-40, MGC119055, MGC15364, MGC3884, SSX

Gene Description synovial sarcoma, X breakpoint 2

Omim ID [300192](#)

Gene Ontology [Hyperlink](#)

**Gene Summary**

The product of this gene belongs to the family of highly homologous synovial sarcoma X (SSX) breakpoint proteins. These proteins may function as transcriptional repressors. They are also capable of eliciting spontaneously humoral and cellular immune responses in cancer patients, and are potentially useful targets in cancer vaccine-based immunotherapy. SSX1, SSX2 and SSX4 gene s have been involved in the t(X;18) translocation characteristically found in all synovial sarcomas. This translocation results in the fusion of the synovial sarcoma translocation gene on chromosome 18 to one of the SSX genes on chromosome X. The encoded hybrid proteins are probably responsible for transforming activity. Two transcript variants encoding distinct isoforms have been identified for this gene. [provided by RefSeq]

**Other Designations**

OTTHUMP00000024290|OTTHUMP00000024291|sarcoma, synovial, X-chromosome-related 2|synovial sarcoma, X breakpoint 2, isoform b|synovial sarcoma, X breakpoint 2B

## Publication Reference

- [SSX2-4 expression in early-stage non-small cell lung cancer.](#)

Greve KB, Pohl M, Olsen KE, Nielsen O, Ditzel HJ, Gjerstorff MF.

Tissue Antigens 2014 May; 83(5):344.

Application: IHC-P, Human, A375, HCT116, HeLa, MZ2-Mel cells, Testis, Non-small cell lung cancer

- [Expression and Immunotherapeutic Targeting of the SSX Family of Cancer-Testis Antigens in Prostate Cancer.](#)

Smith HA, Cronk RJ, Lang JM, McNeel DG.

Cancer Research 2011 Nov; 71(21):6785.

Application: IHC-P, WB-Re, Human, Human testis tissues