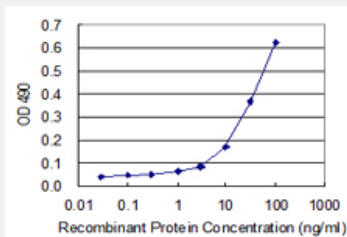


SSX2 (Human) Matched Antibody Pair

Catalog # H00006757-AP22

Size 1 Set

Applications



Sandwich ELISA detection sensitivity ranging from 3 ng/ml to 100 ng/ml.

Specification

Product Description	This antibody pair set comes with a matched antibody pair to detect and quantify the protein level of human SSX2.
Reactivity	Human
Quality Control Testing	Standard curve using recombinant protein (H00006757-P01) as an analyte. Sandwich ELISA detection sensitivity ranging from 3 ng/ml to 100 ng/ml.
Supplied Product	Antibody pair set content: 1. Capture antibody: rabbit MaxPab® affinity purified polyclonal anti-SSX2 (100 ug) 2. Detection antibody: mouse purified polyclonal anti-SSX2 (20 ug) *Reagents are sufficient for at least 1-2 x 96 well plates using recommended protocols.
Storage Instruction	Store reagents of the antibody pair set at -20°C or lower. Please aliquot to avoid repeated freeze thaw cycle. Reagents should be returned to -20°C storage immediately after use.

Applications

- ELISA Pair (Recombinant protein)

[Protocol Download](#)

Gene Info — SSX2

Entrez GeneID [6757](#)

Gene Name SSX2

Gene Alias HD21, HOM-MEL-40, MGC119055, MGC15364, MGC3884, SSX

Gene Description synovial sarcoma, X breakpoint 2

Omim ID [300192](#)

Gene Ontology [Hyperlink](#)

Gene Summary The product of this gene belongs to the family of highly homologous synovial sarcoma X (SSX) breakpoint proteins. These proteins may function as transcriptional repressors. They are also capable of eliciting spontaneously humoral and cellular immune responses in cancer patients, and are potentially useful targets in cancer vaccine-based immunotherapy. SSX1, SSX2 and SSX4 genes have been involved in the t(X;18) translocation characteristically found in all synovial sarcomas. This translocation results in the fusion of the synovial sarcoma translocation gene on chromosome 18 to one of the SSX genes on chromosome X. The encoded hybrid proteins are probably responsible for transforming activity. Two transcript variants encoding distinct isoforms have been identified for this gene. [provided by RefSeq]

Other Designations OTTHUMP00000024290|OTTHUMP00000024291|sarcoma, synovial, X-chromosome-related 2|synovial sarcoma, X breakpoint 2, isoform b|synovial sarcoma, X breakpoint 2B