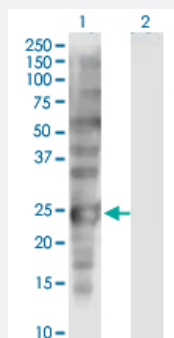


# SSX1 monoclonal antibody (M01), clone 5B2

Catalog # H00006756-M01

Size 100 ug

## Applications

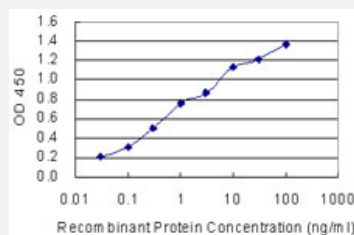


### Western Blot (Transfected lysate)

Western Blot analysis of SSX1 expression in transfected 293T cell line by SSX1 monoclonal antibody (M01), clone 5B2.

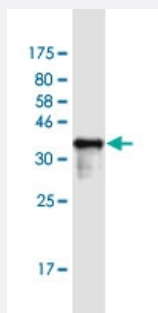
Lane 1: SSX1 transfected lysate (Predicted MW: 21.9 KDa).

Lane 2: Non-transfected lysate.



### Sandwich ELISA (Recombinant protein)

Detection limit for recombinant GST tagged SSX1 is 0.03 ng/ml as a capture antibody.



Western Blot detection against Immunogen (36.74 KDa) .

## Specification

### Product Description

Mouse monoclonal antibody raised against a partial recombinant SSX1.



Immunogen	SSX1 (NP_005626.1, 89 a.a. ~ 188 a.a) partial recombinant protein with GST tag. MW of the GST tag alone is 26 KDa.
Sequence	NRRIQVEHPQMTFGRLHRIIPKIMPKKPAEDENDSKGVSEASGPQNDGKQLHPPGKANISEKINKR SGPKRGKHAWTHRLRERKQLVYEEISDPEEDDE
Host	Mouse
Reactivity	Human
Isotype	IgG2b Kappa
Quality Control Testing	Antibody Reactive Against Recombinant Protein. Western Blot detection against Immunogen (36.74 KDa) .
Storage Buffer	In 1x PBS, pH 7.4
Storage Instruction	Store at -20°C or lower. Aliquot to avoid repeated freezing and thawing.

## Applications

- Western Blot (Transfected lysate)

Western Blot analysis of SSX1 expression in transfected 293T cell line by SSX1 monoclonal antibody (M01), clone 5B2.

Lane 1: SSX1 transfected lysate (Predicted MW: 21.9 KDa).

Lane 2: Non-transfected lysate.

[Protocol Download](#)

- Western Blot (Recombinant protein)

[Protocol Download](#)

- Sandwich ELISA (Recombinant protein)

Detection limit for recombinant GST tagged SSX1 is 0.03 ng/ml as a capture antibody.

[Protocol Download](#)

- ELISA

## Gene Info — SSX1

Entrez GeneID [6756](#)

GeneBank Accession# [NM\\_005635.2](#)



Protein Accession#	<a href="#">NP_005626.1</a>
Gene Name	SSX1
Gene Alias	MGC150425, MGC5162, SSRC
Gene Description	synovial sarcoma, X breakpoint 1
Omim ID	<a href="#">312820</a>
Gene Ontology	<a href="#">Hyperlink</a>
Gene Summary	<p>The product of this gene belongs to the family of highly homologous synovial sarcoma X (SSX) breakpoint proteins. These proteins may function as transcriptional repressors. They are also capable of eliciting spontaneously humoral and cellular immune responses in cancer patients, and are potentially useful targets in cancer vaccine-based immunotherapy. SSX1, SSX2 and SSX4 genes have been involved in the t(X;18) translocation characteristically found in all synovial sarcomas. This translocation results in the fusion of the synovial sarcoma translocation gene on chromosome 18 to one of the SSX genes on chromosome X. The encoded hybrid proteins are probably responsible for transforming activity. [provided by RefSeq]</p>
Other Designations	OTTHUMP00000023245 sarcoma, synovial, X-chromosome-related 1

## Disease

- [Alzheimer disease](#)
- [Cerebral Amyloid Angiopathy](#)
- [Genetic Predisposition to Disease](#)
- [Neuroblastoma](#)