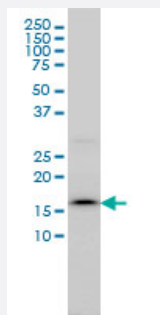


SSR4 monoclonal antibody (M01), clone 2D3

Catalog # H00006748-M01

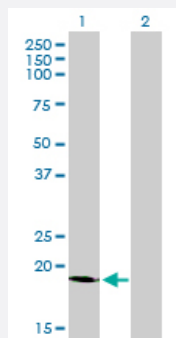
Size 100 ug

Applications



Western Blot (Cell lysate)

SSR4 monoclonal antibody (M01), clone 2D3 Western Blot analysis of SSR4 expression in C32 (Cat # L002V1).

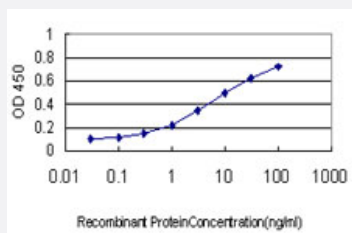


Western Blot (Transfected lysate)

Western Blot analysis of SSR4 expression in transfected 293T cell line by SSR4 monoclonal antibody (M01), clone 2D3.

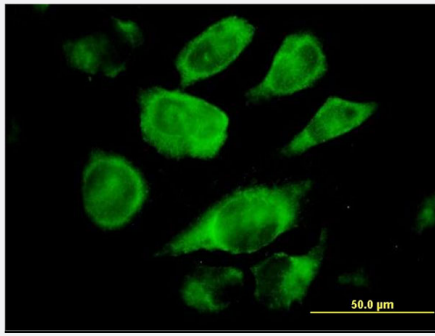
Lane 1: SSR4 transfected lysate(19 kDa).

Lane 2: Non-transfected lysate.



Sandwich ELISA (Recombinant protein)

Detection limit for recombinant GST tagged SSR4 is approximately 0.1ng/ml as a capture antibody.



Immunofluorescence

Immunofluorescence of monoclonal antibody to SSR4 on HeLa cell. [antibody concentration 10 ug/ml]



Western Blot detection against Immunogen (42.24 KDa) .

Specification

Product Description	Mouse monoclonal antibody raised against a full length recombinant SSR4.
Immunogen	SSR4 (AAH03371, 24 a.a. ~ 173 a.a) full-length recombinant protein with GST tag. MW of the GST tag alone is 26 KDa.
Sequence	EACLEPQITPSYYTTS DAVISTETVLIVEISLTCKNRVQNMALYADVGGKQFPVTRGQDVGRYQVS WSLDHKSAHAGTYEVRFFDEESYLLRKAQRNNEDISIIPPLFTVSVDHRGTWNGPWVSTEVLA AIGLVYYLAFSAKSHIQA
Host	Mouse
Reactivity	Human
Isotype	IgG1 Kappa
Quality Control Testing	Antibody Reactive Against Recombinant Protein. Western Blot detection against Immunogen (42.24 KDa) .
Storage Buffer	In 1x PBS, pH 7.4
Storage Instruction	Store at -20°C or lower. Aliquot to avoid repeated freezing and thawing.

Applications

- Western Blot (Cell lysate)

SSR4 monoclonal antibody (M01), clone 2D3 Western Blot analysis of SSR4 expression in C32 (Cat # L002V1).

[Protocol Download](#)

- Western Blot (Transfected lysate)

Western Blot analysis of SSR4 expression in transfected 293T cell line by SSR4 monoclonal antibody (M01), clone 2D3.

Lane 1: SSR4 transfected lysate(19 KDa).

Lane 2: Non-transfected lysate.

[Protocol Download](#)

- Western Blot (Recombinant protein)

[Protocol Download](#)

- Sandwich ELISA (Recombinant protein)

Detection limit for recombinant GST tagged SSR4 is approximately 0.1ng/ml as a capture antibody.

[Protocol Download](#)

- ELISA

- Immunofluorescence

Immunofluorescence of monoclonal antibody to SSR4 on HeLa cell. [antibody concentration 10 ug/ml]

Gene Info — SSR4

Entrez GeneID [6748](#)

GeneBank Accession# [BC003371](#)

Protein Accession# [AAH03371](#)

Gene Name SSR4

Gene Alias TRAPD

Gene Description signal sequence receptor, delta (translocon-associated protein delta)

Omim ID [300090](#)

Gene Ontology

[Hyperlink](#)

Gene Summary

SSR4, also called TRAPD, is assumed to be involved in protein secretion. It is located in the Xq28 region, arranged in a compact head-to-head manner with the IDH3G gene. These two genes are driven by a bidirectional promoter located between them, and encode proteins involved in unrelated biochemical pathways located in different compartments of the cell. The nontranscribed intergenic region represents only 133 bp and is embedded in a CpG island. The CpG island functions as a bidirectional promoter to initiate the transcription of both functionally unrelated genes with distinct expression patterns. SSR4 consists of six exons and is approximately 70 kb telomeric to the ALD gene. Although alternative splicing of exon 5 has not been detected in human SSR4, transcript variants missing the region homologous to human exon 5 have been detected in both *Xenopus laevis* and *Mus musculus*. [provided by RefSeq]

Other Designations

OTTHUMP00000025956|OTTHUMP00000025957|OTTHUMP00000025958|signal sequence receptor, delta|translocon-associated protein delta