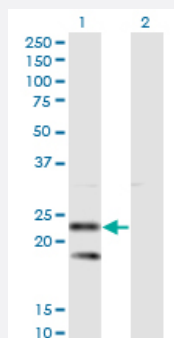


SSR2 monoclonal antibody (M01), clone 4C1

Catalog # H00006746-M01

Size 100 ug

Applications

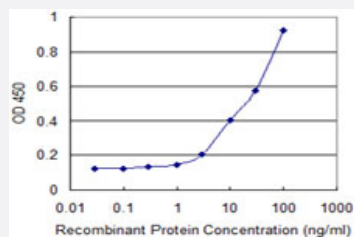


Western Blot (Transfected lysate)

Western Blot analysis of SSR2 expression in transfected 293T cell line by SSR2 monoclonal antibody (M01), clone 4C1.

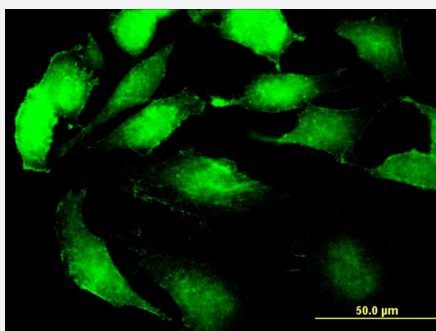
Lane 1: SSR2 transfected lysate (Predicted MW: 20.5 KDa).

Lane 2: Non-transfected lysate.



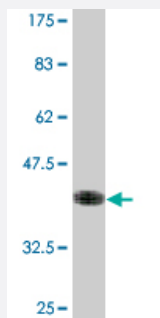
Sandwich ELISA (Recombinant protein)

Detection limit for recombinant GST tagged SSR2 is 1 ng/ml as a capture antibody.



Immunofluorescence

Immunofluorescence of monoclonal antibody to SSR2 on HeLa cell . [antibody concentration 10 ug/ml]



Western Blot detection against Immunogen (36.74 KDa) .

Specification

Product Description	Mouse monoclonal antibody raised against a partial recombinant SSR2.
Immunogen	SSR2 (NP_003136.1, 51 a.a. ~ 150 a.a) partial recombinant protein with GST tag. MW of the GST tag alone is 26 KDa.
Sequence	SSAALDVELSDDSFPPEDFGVSGMLNVKWDRIAPASNVSHTVVLRPLKAGYFNFTSATITYLAQE DGPVVGSTAPGQGGILAQREFDRRFSPHFLDW
Host	Mouse
Reactivity	Human
Interspecies Antigen Sequence	Mouse (100); Rat (100)
Isotype	IgG2a Kappa
Quality Control Testing	Antibody Reactive Against Recombinant Protein. Western Blot detection against Immunogen (36.74 KDa) .
Storage Buffer	In 1x PBS, pH 7.4
Storage Instruction	Store at -20°C or lower. Aliquot to avoid repeated freezing and thawing.

Applications

● Western Blot (Transfected lysate)

Western Blot analysis of SSR2 expression in transfected 293T cell line by SSR2 monoclonal antibody (M01), clone 4C1.

Lane 1: SSR2 transfected lysate (Predicted MW: 20.5 KDa).

Lane 2: Non-transfected lysate.

[Protocol Download](#)

- Western Blot (Recombinant protein)

[Protocol Download](#)

- Sandwich ELISA (Recombinant protein)

Detection limit for recombinant GST tagged SSR2 is 1 ng/ml as a capture antibody.

[Protocol Download](#)

- ELISA

- Immunofluorescence

Immunofluorescence of monoclonal antibody to SSR2 on HeLa cell . [antibody concentration 10 ug/ml]

Gene Info — SSR2

Entrez GeneID [6746](#)

GeneBank Accession# [NM_003145](#)

Protein Accession# [NP_003136.1](#)

Gene Name SSR2

Gene Alias DKFZp686F19123, HSD25, TLAP, TRAP-BETA, TRAPB

Gene Description signal sequence receptor, beta (translocon-associated protein beta)

Omim ID [600867](#)

Gene Ontology [Hyperlink](#)

Gene Summary The signal sequence receptor (SSR) is a glycosylated endoplasmic reticulum (ER) membrane receptor associated with protein translocation across the ER membrane. The SSR consists of 2 sub units, a 34-kD glycoprotein (alpha-SSR or SSR1) and a 22-kD glycoprotein (beta-SSR or SSR2). The human beta-signal sequence receptor gene (SSR2) maps to chromosome bands 1q21-q23. [provided by RefSeq]

Other Designations signal sequence receptor, beta|translocon-associated protein beta

Disease

- [Tobacco Use Disorder](#)