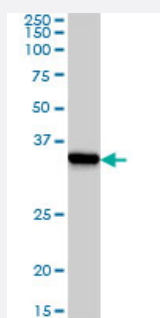


# SSR1 monoclonal antibody (M02), clone 1C11

Catalog # H00006745-M02

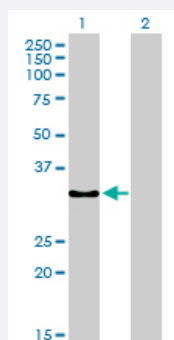
Size 100 ug

## Applications



### Western Blot (Cell lysate)

SSR1 monoclonal antibody (M02), clone 1C11 Western Blot analysis of SSR1 expression in A-431 ( Cat # L015V1 ).

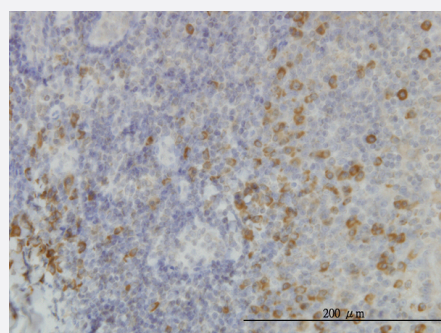


### Western Blot (Transfected lysate)

Western Blot analysis of SSR1 expression in transfected 293T cell line by SSR1 monoclonal antibody (M02), clone 1C11.

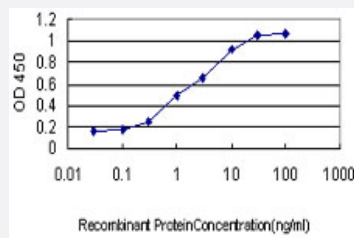
Lane 1: SSR1 transfected lysate(32.2 KDa).

Lane 2: Non-transfected lysate.



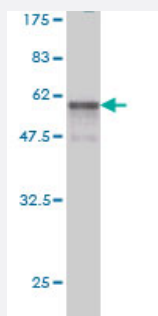
### Immunohistochemistry (Formalin/PFA-fixed paraffin-embedded sections)

Immunoperoxidase of monoclonal antibody to SSR1 on formalin-fixed paraffin-embedded human tonsil. [antibody concentration 3 ug/ml]



## Sandwich ELISA (Recombinant protein)

Detection limit for recombinant GST tagged SSR1 is approximately 0.03ng/ml as a capture antibody.



Western Blot detection against Immunogen (53.68 KDa) .

## Specification

<b>Product Description</b>	Mouse monoclonal antibody raised against a full length recombinant SSR1.
<b>Immunogen</b>	SSR1 (AAH07710, 33 a.a. ~ 286 a.a) full-length recombinant protein with GST tag. MW of the GST tag alone is 26 KDa.
<b>Sequence</b>	QDLTEDEETVEDSIIEDEDDEAEVEEDEPTDLVEDKEEEDVSGEPEASPSADTTILFVKGEDFPA NNIVKFLVGFTNKGTEDFIVESLDASFRYPQDYQFYIQNFTALPLNTVPPQRQATFEYSFIPAEP MGGRPFGVLINLNYKDLNGNVFQDAVFNQTVTVIEREDGLDGETIFMYMFLAGLGLLVVGLHQLLES RKRRPRIQKVEMGTSSQNDVDMSWIPQETLNQINKASPRRLPRKRAQKRSVGSDE
<b>Host</b>	Mouse
<b>Reactivity</b>	Human
<b>Interspecies Antigen Sequence</b>	Mouse (98); Rat (97)
<b>Isotype</b>	IgG1 Kappa
<b>Quality Control Testing</b>	Antibody Reactive Against Recombinant Protein. Western Blot detection against Immunogen (53.68 KDa) .
<b>Storage Buffer</b>	In 1x PBS, pH 7.4
<b>Storage Instruction</b>	Store at -20°C or lower. Aliquot to avoid repeated freezing and thawing.

## Applications

- Western Blot (Cell lysate)

SSR1 monoclonal antibody (M02), clone 1C11 Western Blot analysis of SSR1 expression in A-431 ( Cat # L015V1 ).

[Protocol Download](#)

- Western Blot (Transfected lysate)

Western Blot analysis of SSR1 expression in transfected 293T cell line by SSR1 monoclonal antibody (M02), clone 1C11.

Lane 1: SSR1 transfected lysate(32.2 KDa).

Lane 2: Non-transfected lysate.

[Protocol Download](#)

- Western Blot (Recombinant protein)

[Protocol Download](#)

- Immunohistochemistry (Formalin/PFA-fixed paraffin-embedded sections)

Immunoperoxidase of monoclonal antibody to SSR1 on formalin-fixed paraffin-embedded human tonsil. [antibody concentration 3 ug/ml]

[Protocol Download](#)

- Sandwich ELISA (Recombinant protein)

Detection limit for recombinant GST tagged SSR1 is approximately 0.03ng/ml as a capture antibody.

[Protocol Download](#)

- ELISA

## Gene Info — SSR1

Entrez GeneID	<a href="#">6745</a>
---------------	----------------------

GeneBank Accession#	<a href="#">BC007710</a>
---------------------	--------------------------

Protein Accession#	<a href="#">AAH07710</a>
--------------------	--------------------------

Gene Name	SSR1
-----------	------

Gene Alias	DKFZp781N23103, FLJ14232, FLJ22100, FLJ23034, FLJ78242, FLJ93042, TRAPA
------------	---

Gene Description	signal sequence receptor, alpha
Omim ID	<a href="#">600868</a>
Gene Ontology	<a href="#">Hyperlink</a>
Gene Summary	<p>The signal sequence receptor (SSR) is a glycosylated endoplasmic reticulum (ER) membrane receptor associated with protein translocation across the ER membrane. The SSR consists of 2 subunits, a 34-kD glycoprotein encoded by this gene and a 22-kD glycoprotein. This gene generates several mRNA species as a result of complex alternative polyadenylation. This gene is unusual in that it utilizes arrays of polyA signal sequences that are mostly non-canonical. [provided by RefSeq]</p>
Other Designations	SSR alpha subunit TRAP alpha translocon-associated protein alpha subunit