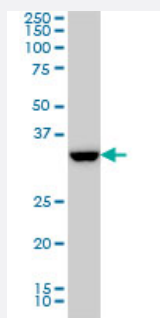


SSR1 monoclonal antibody (M01), clone 1A12

Catalog # H00006745-M01

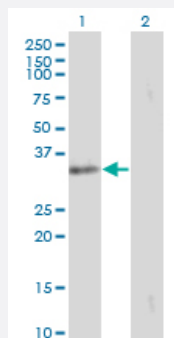
Size 100 ug

Applications



Western Blot (Cell lysate)

SSR1 monoclonal antibody (M01), clone 1A12 Western Blot analysis of SSR1 expression in HL-60 (Cat # L014V1).

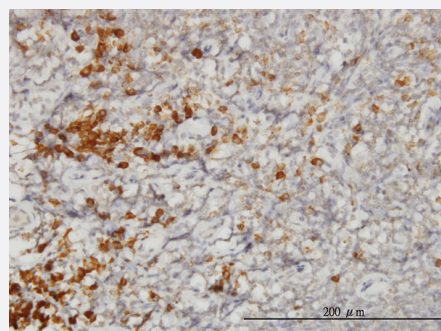


Western Blot (Transfected lysate)

Western Blot analysis of SSR1 expression in transfected 293T cell line by SSR1 monoclonal antibody (M01), clone 1A12.

Lane 1: SSR1 transfected lysate(32.2 KDa).

Lane 2: Non-transfected lysate.

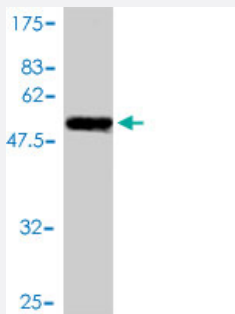
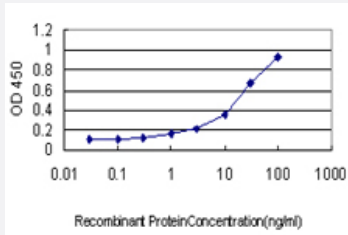


Immunohistochemistry (Formalin/PFA-fixed paraffin-embedded sections)

Immunoperoxidase of monoclonal antibody to SSR1 on formalin-fixed paraffin-embedded human tonsil. [antibody concentration 3 ug/ml]

Sandwich ELISA (Recombinant protein)

Detection limit for recombinant GST tagged SSR1 is approximately 1ng/ml as a capture antibody.



Western Blot detection against Immunogen (53.68 KDa) .

Specification

Product Description	Mouse monoclonal antibody raised against a full length recombinant SSR1.
Immunogen	SSR1 (AAH07710, 33 a.a. ~ 286 a.a) full-length recombinant protein with GST tag. MW of the GST tag alone is 26 KDa.
Sequence	QDLTEDEETVEDSIIIEDEDDEAEVEEDEPTDLVEDKEEEDVSGEPEASPSADTTILFVKGEDFPA NNIVKFLVGFTNKGTEDFIVESLDASFRYPQDYQFYIQNFTALPLNTVVPQRQATFEYSFIPAEP MGGRPFGVLINLNYKDLNGNVFQDAVFNQTVTVIEREDGLDGETIFMYMFLAGLGLLVVGLHQLLES RKRKRPIQKVEMGTSSQNDVDMSWIPQETLNQINKASPRRLPRKRAQKRSVGSDE
Host	Mouse
Reactivity	Human
Interspecies Antigen Sequence	Mouse (98); Rat (97)
Isotype	IgG1 Kappa
Quality Control Testing	Antibody Reactive Against Recombinant Protein. Western Blot detection against Immunogen (53.68 KDa) .
Storage Buffer	In 1x PBS, pH 7.4
Storage Instruction	Store at -20°C or lower. Aliquot to avoid repeated freezing and thawing.

Applications

- Western Blot (Cell lysate)

SSR1 monoclonal antibody (M01), clone 1A12 Western Blot analysis of SSR1 expression in HL-60 (Cat # L014V1).

[Protocol Download](#)

- Western Blot (Transfected lysate)

Western Blot analysis of SSR1 expression in transfected 293T cell line by SSR1 monoclonal antibody (M01), clone 1A12.

Lane 1: SSR1 transfected lysate(32.2 KDa).

Lane 2: Non-transfected lysate.

[Protocol Download](#)

- Western Blot (Recombinant protein)

[Protocol Download](#)

- Immunohistochemistry (Formalin/PFA-fixed paraffin-embedded sections)

Immunoperoxidase of monoclonal antibody to SSR1 on formalin-fixed paraffin-embedded human tonsil. [antibody concentration 3 ug/ml]

[Protocol Download](#)

- Sandwich ELISA (Recombinant protein)

Detection limit for recombinant GST tagged SSR1 is approximately 1ng/ml as a capture antibody.

[Protocol Download](#)

- ELISA

Gene Info — SSR1

Entrez GeneID	6745
---------------	----------------------

GeneBank Accession#	BC007710
---------------------	--------------------------

Protein Accession#	AAH07710
--------------------	--------------------------

Gene Name	SSR1
-----------	------

Gene Alias	DKFZp781N23103, FLJ14232, FLJ22100, FLJ23034, FLJ78242, FLJ93042, TRAPA
------------	---

Gene Description	signal sequence receptor, alpha
Omim ID	600868
Gene Ontology	Hyperlink
Gene Summary	<p>The signal sequence receptor (SSR) is a glycosylated endoplasmic reticulum (ER) membrane receptor associated with protein translocation across the ER membrane. The SSR consists of 2 subunits, a 34-kD glycoprotein encoded by this gene and a 22-kD glycoprotein. This gene generates several mRNA species as a result of complex alternative polyadenylation. This gene is unusual in that it utilizes arrays of polyA signal sequences that are mostly non-canonical. [provided by RefSeq]</p>
Other Designations	SSR alpha subunit TRAP alpha translocon-associated protein alpha subunit