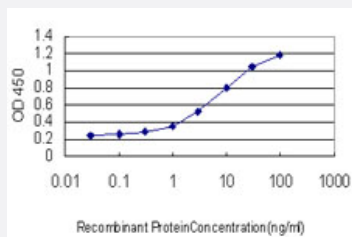


# SSBP1 monoclonal antibody (M10), clone 4C1

Catalog # H00006742-M10

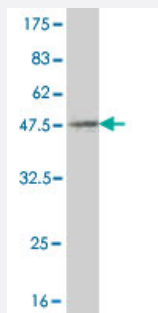
Size 100 ug

## Applications



### Sandwich ELISA (Recombinant protein)

Detection limit for recombinant GST tagged SSBP1 is approximately 0.3ng/ml as a capture antibody.



Western Blot detection against Immunogen (42.02 KDa) .

## Specification

### Product Description

Mouse monoclonal antibody raised against a full length recombinant SSBP1.

### Immunogen

SSBP1 (AAH00895, 1 a.a. ~ 148 a.a) full-length recombinant protein with GST tag. MW of the GST tag alone is 26 KDa.

### Sequence

MFRRPVLQVLRQFVRHESETTTSLVLERSLNVRVHLLGRVGQDPVLRQVEGKNPVTIFSLATNEMW  
RSGDSEVYQLGDVVSQKTTWHRISVFRPGLRDVAYQYVKKGSRIYLEGKIDYGEYMDKNNVRRQAT  
TIADNIIFLSDQTKEKE

### Host

Mouse

### Reactivity

Human

Interspecies Antigen Sequence	Mouse (93)
Isotype	IgG2a Kappa
Quality Control Testing	Antibody Reactive Against Recombinant Protein. Western Blot detection against Immunogen (42.02 KDa) .
Storage Buffer	In 1x PBS, pH 7.4
Storage Instruction	Store at -20°C or lower. Aliquot to avoid repeated freezing and thawing.

## Applications

- Western Blot (Recombinant protein)

[Protocol Download](#)

- Sandwich ELISA (Recombinant protein)

Detection limit for recombinant GST tagged SSBP1 is approximately 0.3ng/ml as a capture antibody.

[Protocol Download](#)

- ELISA

## Gene Info — SSBP1

Entrez GeneID	<a href="#">6742</a>
GeneBank Accession#	<a href="#">BC000895</a>
Protein Accession#	<a href="#">AAH00895</a>
Gene Name	SSBP1
Gene Alias	SSBP
Gene Description	single-stranded DNA binding protein 1
Omim ID	<a href="#">600439</a>
Gene Ontology	<a href="#">Hyperlink</a>
Gene Summary	SSBP is a housekeeping gene involved in mitochondrial biogenesis (Tiranti et al., 1995 [PubMed 7789991]).[supplied by OMIM]

**Other Designations**

single-stranded DNA-binding protein 1

**Publication Reference**

- [Involvement of p53 in cell death following cell cycle arrest and mitotic catastrophe induced by rotenone.](#)

Goncalves AP, Maximo V, Lima J, Singh KK, Soares P, Videira A.

Biochimica et Biophysica Acta 2011 Mar; 1813(3):492.

Application: WB, Human, TPC-1 cells

**Pathway**

- [DNA replication](#)
- [Homologous recombination](#)
- [Mismatch repair](#)