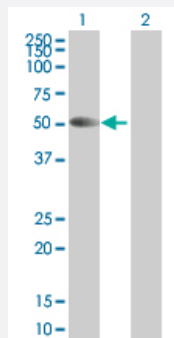


TRIM21 293T Cell Transient Overexpression Lysate(Denatured)

Catalog # H00006737-T01

Size 100 uL

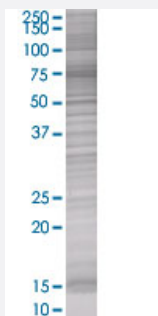
Applications



Western Blot

Lane 1: TRIM21 transfected lysate (54.2 KDa)

Lane 2: Non-transfected lysate.



SDS-PAGE Gel

TRIM21 transfected lysate.

Specification

Transfected Cell Line 293T

Plasmid pCMV-TRIM21 full-length

Host Human

Theoretical MW (kDa) 52.36

Quality Control Testing Transient overexpression cell lysate was tested with Anti-TRIM21 antibody ([H00006737-B01](#)) by Western Blots.
Western Blot
Lane 1: TRIM21 transfected lysate (54.2 KDa)
Lane 2: Non-transfected lysate.
SDS-PAGE Gel
TRIM21 transfected lysate.

Storage Buffer

1X Sample Buffer (50 mM Tris-HCl, 2% SDS, 10% glycerol, 300 mM 2-mercaptoethanol, 0.01% Bromophenol blue)

Storage Instruction

Store at -80°C. Aliquot to avoid repeated freezing and thawing.

Applications

- Western Blot

Gene Info — TRIM21

Entrez GeneID[6737](#)**GeneBank Accession#**[NM_003141](#)**Protein Accession#**[NP_003132](#)**Gene Name**

TRIM21

Gene Alias

RNF81, RO52, SSA, SSA1

Gene Description

tripartite motif-containing 21

Omim ID[109092](#)**Gene Ontology**[Hyperlink](#)**Gene Summary**

This gene encodes a member of the tripartite motif (TRIM) family. The TRIM motif includes three zinc-binding domains, a RING, a B-box type 1 and a B-box type 2, and a coiled-coil region. The encoded protein is part of the RoSSA ribonucleoprotein, which includes a single polypeptide and one of four small RNA molecules. The RoSSA particle localizes to both the cytoplasm and the nucleus. RoSSA interacts with autoantigens in patients with Sjogren syndrome and systemic lupus erythematosus. Alternatively spliced transcript variants for this gene have been described but the full-length nature of only one has been determined. [provided by RefSeq]

Other Designations

Sicca syndrome antigen A|Sjogren syndrome antigen A1 (52kDa, ribonucleoprotein autoantigen SS-A/Ro)|tripartite motif protein 21

Pathway

- [Systemic lupus erythematosus](#)

Disease

- [Anemia](#)
- [Genetic Predisposition to Disease](#)
- [Lupus Erythematosus](#)
- [Ovarian Neoplasms](#)