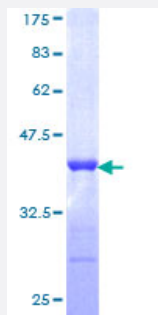


# TRIM21 (Human) Recombinant Protein (Q01)

Catalog # H00006737-Q01

Size 25 ug, 10 ug

## Applications



## Specification

<b>Product Description</b>	Human TRIM21 partial ORF ( NP_003132, 68 a.a. - 175 a.a.) recombinant protein with GST-tag at N-terminal.
<b>Sequence</b>	QLANMVNNLKEISQEAREGTQGERCAVHGERLHLFCEKDGKALCWVCAQSRKHRDHAMVPLEE AAQEYQEKLQVALGELRRKQELAEKLEVEIAIKRADWKKTVETQK
<b>Host</b>	Wheat Germ (in vitro)
<b>Theoretical MW (kDa)</b>	37.62
<b>Preparation Method</b>	<a href="#">in vitro wheat germ expression system</a>
<b>Purification</b>	Glutathione Sepharose 4 Fast Flow
<b>Quality Control Testing</b>	12.5% SDS-PAGE Stained with Coomassie Blue.
<b>Storage Buffer</b>	50 mM Tris-HCl, 10 mM reduced Glutathione, pH=8.0 in the elution buffer.
<b>Storage Instruction</b>	Store at -80°C. Aliquot to avoid repeated freezing and thawing.
<b>Note</b>	Best use within three months from the date of receipt of this protein.

## Applications

- Enzyme-linked Immunoabsorbent Assay
- Western Blot (Recombinant protein)
- Antibody Production
- Protein Array

## Gene Info — TRIM21

Entrez GeneID [6737](#)

GeneBank Accession# [NM\\_003141](#)

Protein Accession# [NP\\_003132](#)

Gene Name TRIM21

Gene Alias RNF81, RO52, SSA, SSA1

Gene Description tripartite motif-containing 21

Omim ID [109092](#)

Gene Ontology [Hyperlink](#)

**Gene Summary** This gene encodes a member of the tripartite motif (TRIM) family. The TRIM motif includes three zinc-binding domains, a RING, a B-box type 1 and a B-box type 2, and a coiled-coil region. The encoded protein is part of the RoSSA ribonucleoprotein, which includes a single polypeptide and one of four small RNA molecules. The RoSSA particle localizes to both the cytoplasm and the nucleus. RoSSA interacts with autoantigens in patients with Sjogren syndrome and systemic lupus erythematosus. Alternatively spliced transcript variants for this gene have been described but the full-length nature of only one has been determined. [provided by RefSeq]

**Other Designations** Sicca syndrome antigen A|Sjogren syndrome antigen A1 (52kDa, ribonucleoprotein autoantigen SS-A/Ro)|tripartite motif protein 21

## Pathway

- [Systemic lupus erythematosus](#)

## Disease

- [Anemia](#)
- [Genetic Predisposition to Disease](#)
- [Lupus Erythematosus](#)
- [Ovarian Neoplasms](#)