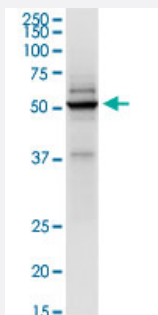


# TRIM21 (Human) IP-WB Antibody Pair

Catalog # H00006737-PW1

Size 1 Set

## Applications



Immunoprecipitation of TRIM21 transfected lysate using rabbit polyclonal anti-TRIM21 and Protein A Magnetic Bead ([U0007](#)), and immunoblotted with mouse purified polyclonal anti-TRIM21.

## Specification

<b>Product Description</b>	This IP-WB antibody pair set comes with one antibody for immunoprecipitation and another to detect the precipitated protein in western blot.
<b>Reactivity</b>	Human
<b>Quality Control Testing</b>	Immunoprecipitation-Western Blot (IP-WB) Immunoprecipitation of TRIM21 transfected lysate using rabbit polyclonal anti-TRIM21 and Protein A Magnetic Bead ( <a href="#">U0007</a> ), and immunoblotted with mouse purified polyclonal anti-TRIM21.
<b>Supplied Product</b>	Antibody pair set content: 1. Antibody pair for IP: rabbit polyclonal anti-TRIM21 (300 ul) 2. Antibody pair for WB: mouse purified polyclonal anti-TRIM21 (50 ug)
<b>Storage Instruction</b>	Store reagents of the antibody pair set at -20°C or lower. Please aliquot to avoid repeated freeze thaw cycle. Reagents should be returned to -20°C storage immediately after use.

## Applications

- Immunoprecipitation-Western Blot

[Protocol Download](#)

## Gene Info — TRIM21

Entrez GeneID [6737](#)

Gene Name TRIM21

Gene Alias RNF81, RO52, SSA, SSA1

Gene Description tripartite motif-containing 21

Omim ID [109092](#)

Gene Ontology [Hyperlink](#)

**Gene Summary** This gene encodes a member of the tripartite motif (TRIM) family. The TRIM motif includes three zinc-binding domains, a RING, a B-box type 1 and a B-box type 2, and a coiled-coil region. The encoded protein is part of the RoSSA ribonucleoprotein, which includes a single polypeptide and one of four small RNA molecules. The RoSSA particle localizes to both the cytoplasm and the nucleus. RoSSA interacts with autoantigens in patients with Sjogren syndrome and systemic lupus erythematosus. Alternatively spliced transcript variants for this gene have been described but the full-length nature of only one has been determined. [provided by RefSeq]

**Other Designations** Sicca syndrome antigen A|Sjogren syndrome antigen A1 (52kDa, ribonucleoprotein autoantigen SS-A/Ro)|tripartite motif protein 21

## Pathway

- [Systemic lupus erythematosus](#)

## Disease

- [Anemia](#)
- [Genetic Predisposition to Disease](#)
- [Lupus Erythematosus](#)
- [Ovarian Neoplasms](#)