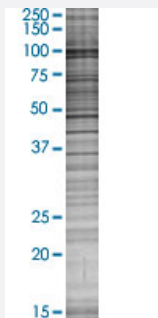


# SRPK1 293T Cell Transient Overexpression Lysate(Denatured)

Catalog # H00006732-T02

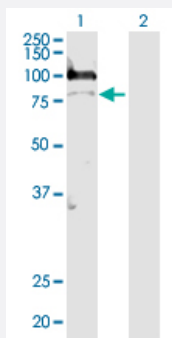
Size 100 uL

## Applications



### SDS-PAGE Gel

SRPK1 transfected lysate.



### Western Blot

Lane 1: SRPK1 transfected lysate ( 74.3 KDa)

Lane 2: Non-transfected lysate.

## Specification

**Transfected Cell Line** 293T

**Plasmid** pCMV-SRPK1 full-length

**Host** Human

**Theoretical MW (kDa)** 74.3

**Quality Control Testing** Transient overexpression cell lysate was tested with Anti-SRPK1 antibody ([H00006732-D01](#)) by Western Blots.  
SDS-PAGE Gel  
SRPK1 transfected lysate.  
Western Blot  
Lane 1: SRPK1 transfected lysate ( 74.3 KDa)  
Lane 2: Non-transfected lysate.

**Storage Buffer**

1X Sample Buffer (50 mM Tris-HCl, 2% SDS, 10% glycerol, 300 mM 2-mercaptoethanol, 0.01% Bromophenol blue)

**Storage Instruction**

Store at -80°C. Aliquot to avoid repeated freezing and thawing.

## Applications

- Western Blot

## Gene Info — SRPK1

**Entrez GeneID**[6732](#)**GeneBank Accession#**[BC038292.1](#)**Protein Accession#**[AAH38292.1](#)**Gene Name**

SRPK1

**Gene Alias**

SFRSK1

**Gene Description**

SFRS protein kinase 1

**Omim ID**[601939](#)**Gene Ontology**[Hyperlink](#)**Gene Summary**

This gene encodes a serine/arginine protein kinase specific for the SR (serine/arginine-rich domain) family of splicing factors. The protein localizes to the nucleus and the cytoplasm. It is thought to play a role in regulation of both constitutive and alternative splicing by regulating intracellular localization of splicing factors. A second alternatively spliced transcript variant for this gene has been described, but its full length nature has not been determined. [provided by RefSeq]

**Other Designations**

SR protein kinase 1

## Disease

- [Tobacco Use Disorder](#)