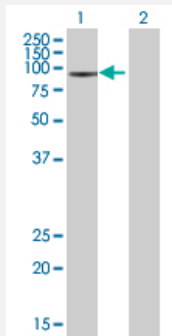


SRPK1 293T Cell Transient Overexpression Lysate(Denatured)

Catalog # H00006732-T01

Size 100 uL

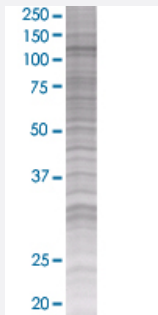
Applications



Western Blot

Lane 1: SRPK1 transfected lysate (74.3 KDa)

Lane 2: Non-transfected lysate.



SDS-PAGE Gel

SRPK1 transfected lysate.

Specification

Transfected Cell Line 293T

Plasmid pCMV-SRPK1 full-length

Host Human

Theoretical MW (kDa) 72.16

Quality Control Testing Transient overexpression cell lysate was tested with Anti-SRPK1 antibody ([H00006732-B01](#)) by Western Blots.
Western Blot
Lane 1: SRPK1 transfected lysate (74.3 KDa)
Lane 2: Non-transfected lysate.
SDS-PAGE Gel
SRPK1 transfected lysate.

Storage Buffer

1X Sample Buffer (50 mM Tris-HCl, 2% SDS, 10% glycerol, 300 mM 2-mercaptoethanol, 0.01% Bromophenol blue)

Storage Instruction

Store at -80°C. Aliquot to avoid repeated freezing and thawing.

Applications

- Western Blot

Gene Info — SRPK1

Entrez GeneID[6732](#)**GeneBank Accession#**[BC038292.1](#)**Protein Accession#**

-

Gene Name

SRPK1

Gene Alias

SFRSK1

Gene Description

SFRS protein kinase 1

Omim ID[601939](#)**Gene Ontology**[Hyperlink](#)**Gene Summary**

This gene encodes a serine/arginine protein kinase specific for the SR (serine/arginine-rich domain) family of splicing factors. The protein localizes to the nucleus and the cytoplasm. It is thought to play a role in regulation of both constitutive and alternative splicing by regulating intracellular localization of splicing factors. A second alternatively spliced transcript variant for this gene has been described, but its full length nature has not been determined. [provided by RefSeq]

Other Designations

SR protein kinase 1

Disease

- [Tobacco Use Disorder](#)