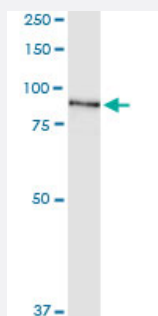


SRPK1 (Human) IP-WB Antibody Pair

Catalog # H00006732-PW1

Size 1 Set

Applications



Immunoprecipitation of SRPK1 transfected lysate using rabbit polyclonal anti-SRPK1 and Protein A Magnetic Bead ([U0007](#)), and immunoblotted with mouse polyclonal anti-SRPK1.

Specification

Product Description	This IP-WB antibody pair set comes with one antibody for immunoprecipitation and another to detect the precipitated protein in western blot.
Reactivity	Human
Quality Control Testing	Immunoprecipitation-Western Blot (IP-WB) Immunoprecipitation of SRPK1 transfected lysate using rabbit polyclonal anti-SRPK1 and Protein A Magnetic Bead (U0007), and immunoblotted with mouse polyclonal anti-SRPK1.
Supplied Product	Antibody pair set content: 1. Antibody pair for IP: rabbit polyclonal anti-SRPK1 (300 ul) 2. Antibody pair for WB: mouse polyclonal anti-SRPK1 (50 ul)
Storage Instruction	Store reagents of the antibody pair set at -20°C or lower. Please aliquot to avoid repeated freeze thaw cycle. Reagents should be returned to -20°C storage immediately after use.

Applications

- Immunoprecipitation-Western Blot

[Protocol Download](#)

Gene Info — SRPK1

Entrez GeneID	6732
Gene Name	SRPK1
Gene Alias	SFRSK1
Gene Description	SFRS protein kinase 1
Omim ID	601939
Gene Ontology	Hyperlink
Gene Summary	<p>This gene encodes a serine/arginine protein kinase specific for the SR (serine/arginine-rich domain) family of splicing factors. The protein localizes to the nucleus and the cytoplasm. It is thought to play a role in regulation of both constitutive and alternative splicing by regulating intracellular localization of splicing factors. A second alternatively spliced transcript variant for this gene has been described, but its full length nature has not been determined. [provided by RefSeq]</p>
Other Designations	SR protein kinase 1

Disease

- [Tobacco Use Disorder](#)