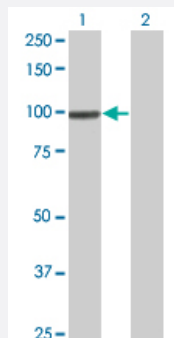


# SRPK1 monoclonal antibody (M11A), clone 1D11

Catalog # H00006732-M11A

Size 200 uL

## Applications

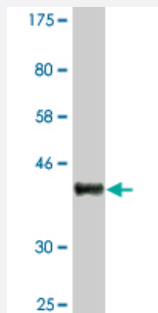


### Western Blot (Transfected lysate)

Western Blot analysis of SRPK1 expression in transfected 293T cell line by SRPK1 monoclonal antibody (M11A), clone 1D11.

Lane 1: SRPK1 transfected lysate(92.407 KDa).

Lane 2: Non-transfected lysate.



Western Blot detection against Immunogen (36.63 KDa) .

## Specification

<b>Product Description</b>	Mouse monoclonal antibody raised against a partial recombinant SRPK1.
<b>Immunogen</b>	SRPK1 (AAH38292, 371 a.a. ~ 470 a.a) partial recombinant protein with GST tag. MW of the GST tag alone is 26 KDa.
<b>Sequence</b>	NETLRHKEDLHNANDCDVQNLNQESSFLSSQNGDSSTSQETDSCPTITSEVSDTMVCQSSSTVG QSFSEQHISQLQESIRAEIPCEDEQEHEHNGPLDNK
<b>Host</b>	Mouse
<b>Reactivity</b>	Human
<b>Isotype</b>	IgG2b Kappa

**Quality Control Testing**

Antibody Reactive Against Recombinant Protein.  
Western Blot detection against Immunogen (36.63 KDa) .

**Storage Buffer**

In ascites fluid

**Storage Instruction**

Store at -20°C or lower. Aliquot to avoid repeated freezing and thawing.

## Applications

- Western Blot (Transfected lysate)

Western Blot analysis of SRPK1 expression in transfected 293T cell line by SRPK1 monoclonal antibody (M11A), clone 1D11.

Lane 1: SRPK1 transfected lysate(92.407 KDa).

Lane 2: Non-transfected lysate.

[Protocol Download](#)

- Western Blot (Recombinant protein)

[Protocol Download](#)

- ELISA

## Gene Info — SRPK1

Entrez GeneID

[6732](#)

GeneBank Accession#

[BC038292](#)

Protein Accession#

[AAH38292](#)

Gene Name

SRPK1

Gene Alias

SFRSK1

Gene Description

SFRS protein kinase 1

Omim ID

[601939](#)

Gene Ontology

[Hyperlink](#)

**Gene Summary**

This gene encodes a serine/arginine protein kinase specific for the SR (serine/arginine-rich domain) family of splicing factors. The protein localizes to the nucleus and the cytoplasm. It is thought to play a role in regulation of both constitutive and alternative splicing by regulating intracellular localization of splicing factors. A second alternatively spliced transcript variant for this gene has been described, but its full length nature has not been determined. [provided by RefSeq]

**Other Designations**

SR protein kinase 1

**Disease**

- [Tobacco Use Disorder](#)