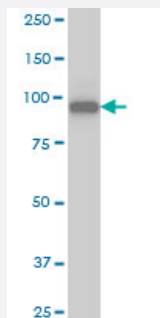


# SRPK1 monoclonal antibody (M03), clone 6G9

Catalog # H00006732-M03

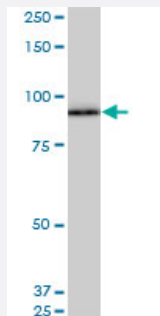
Size 100 ug

## Applications



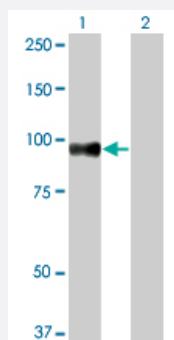
### Western Blot (Cell lysate)

SRPK1 monoclonal antibody (M03), clone 6G9 Western Blot analysis of SRPK1 expression in Jurkat ( Cat # L017V1 ).



### Western Blot (Cell lysate)

SRPK1 monoclonal antibody (M03), clone 6G9. Western Blot analysis of SRPK1 expression in HepG2 ( Cat # L019V1 ).



### Western Blot (Transfected lysate)

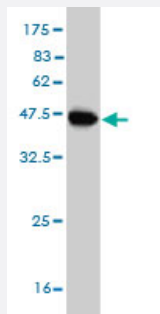
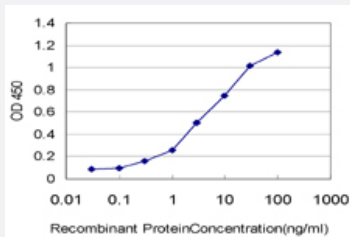
Western Blot analysis of SRPK1 expression in transfected 293T cell line by SRPK1 monoclonal antibody (M03), clone 6G9.

Lane 1: SRPK1 transfected lysate(92.407 KDa).

Lane 2: Non-transfected lysate.

## Sandwich ELISA (Recombinant protein)

Detection limit for recombinant GST tagged SRPK1 is approximately 0.1ng/ml as a capture antibody.



Western Blot detection against Immunogen (36.63 KDa) .

## Specification

<b>Product Description</b>	Mouse monoclonal antibody raised against a partial recombinant SRPK1.
<b>Immunogen</b>	SRPK1 (AAH38292, 371 a.a. ~ 470 a.a) partial recombinant protein with GST tag. MW of the GST tag alone is 26 KDa.
<b>Sequence</b>	NETLRHKEDLHNANDCDVQNLNQESSFLSSQNGDSSTSQETDCTPITSEVSDTMVCQSSSTVGQSFSEQHISQLQESIRAEIPCEDEQEHEHNGPLDNK
<b>Host</b>	Mouse
<b>Reactivity</b>	Human
<b>Isotype</b>	IgG2a Kappa
<b>Quality Control Testing</b>	Antibody Reactive Against Recombinant Protein. Western Blot detection against Immunogen (36.63 KDa) .
<b>Storage Buffer</b>	In 1x PBS, pH 7.4
<b>Storage Instruction</b>	Store at -20°C or lower. Aliquot to avoid repeated freezing and thawing.

## Applications

- Western Blot (Cell lysate)

SRPK1 monoclonal antibody (M03), clone 6G9 Western Blot analysis of SRPK1 expression in Jurkat ( Cat # L017V1 ).

[Protocol Download](#)

- Western Blot (Cell lysate)

SRPK1 monoclonal antibody (M03), clone 6G9. Western Blot analysis of SRPK1 expression in HepG2 ( Cat # L019V1 ).

[Protocol Download](#)

- Western Blot (Transfected lysate)

Western Blot analysis of SRPK1 expression in transfected 293T cell line by SRPK1 monoclonal antibody (M03), clone 6G9.

Lane 1: SRPK1 transfected lysate(92.407 KDa).

Lane 2: Non-transfected lysate.

[Protocol Download](#)

- Western Blot (Recombinant protein)

[Protocol Download](#)

- Sandwich ELISA (Recombinant protein)

Detection limit for recombinant GST tagged SRPK1 is approximately 0.1ng/ml as a capture antibody.

[Protocol Download](#)

- ELISA

## Gene Info — SRPK1

Entrez GeneID	<a href="#">6732</a>
---------------	----------------------

GeneBank Accession#	<a href="#">BC038292</a>
---------------------	--------------------------

Protein Accession#	<a href="#">AAH38292</a>
--------------------	--------------------------

Gene Name	SRPK1
-----------	-------

Gene Alias	SFRSK1
------------	--------

Gene Description	SFRS protein kinase 1
------------------	-----------------------

Omim ID	<a href="#">601939</a>
---------	------------------------

## Gene Ontology

[Hyperlink](#)

## Gene Summary

This gene encodes a serine/arginine protein kinase specific for the SR (serine/arginine-rich domain) family of splicing factors. The protein localizes to the nucleus and the cytoplasm. It is thought to play a role in regulation of both constitutive and alternative splicing by regulating intracellular localization of splicing factors. A second alternatively spliced transcript variant for this gene has been described, but its full length nature has not been determined. [provided by RefSeq]

## Other Designations

SR protein kinase 1

## Disease

- [Tobacco Use Disorder](#)