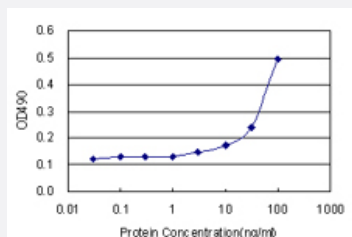


SRPK1 (Human) Matched Antibody Pair

Catalog # H00006732-AP11

Size 1 Set

Applications



Sandwich ELISA detection sensitivity ranging from 3 ng/ml to 100 ng/ml.

Specification

Product Description	This antibody pair set comes with a matched antibody pair to detect and quantify the protein level of human SRPK1.
Reactivity	Human
Quality Control Testing	Standard curve using recombinant protein (H00006732-P01) as an analyte. Sandwich ELISA detection sensitivity ranging from 3 ng/ml to 100 ng/ml.
Supplied Product	Antibody pair set content: 1. Capture antibody: rabbit MaxPab® affinity purified polyclonal anti-SRPK1 (100 ug) 2. Detection antibody: mouse monoclonal anti-SRPK1, IgG2a Kappa (20 ug) *Reagents are sufficient for at least 1-2 x 96 well plates using recommended protocols.
Storage Instruction	Store reagents of the antibody pair set at -20°C or lower. Please aliquot to avoid repeated freeze thaw cycle. Reagents should be returned to -20°C storage immediately after use.

Applications

- ELISA Pair (Recombinant protein)

[Protocol Download](#)

Gene Info — SRPK1

Entrez GeneID	6732
Gene Name	SRPK1
Gene Alias	SFRSK1
Gene Description	SFRS protein kinase 1
Omim ID	601939
Gene Ontology	Hyperlink
Gene Summary	<p>This gene encodes a serine/arginine protein kinase specific for the SR (serine/arginine-rich domain) family of splicing factors. The protein localizes to the nucleus and the cytoplasm. It is thought to play a role in regulation of both constitutive and alternative splicing by regulating intracellular localization of splicing factors. A second alternatively spliced transcript variant for this gene has been described, but its full length nature has not been determined. [provided by RefSeq]</p>
Other Designations	SR protein kinase 1

Disease

- [Tobacco Use Disorder](#)