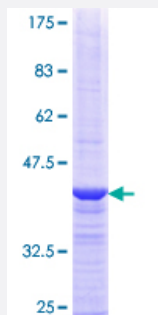


SRP68 (Human) Recombinant Protein (Q01)

Catalog # H00006730-Q01

Size 25 ug, 10 ug

Applications



Specification

Product Description	Human SRP68 partial ORF (NP_055045.2, 531 a.a. - 627 a.a.) recombinant protein with GST-tag at N-terminal.
Sequence	AILDANDAHQTETSSSQVKDNKPLVERFETFCLDPSLVTKQANLVHFPPGFQPIPCCKPLFFDLALN HVAFPPLLEDKLEQKTKSGLTGYIKGIFGFRS
Host	Wheat Germ (in vitro)
Theoretical MW (kDa)	36.41
Interspecies Antigen Sequence	Mouse (95); Rat (93)
Preparation Method	in vitro wheat germ expression system
Purification	Glutathione Sepharose 4 Fast Flow
Quality Control Testing	12.5% SDS-PAGE Stained with Coomassie Blue.
Storage Buffer	50 mM Tris-HCl, 10 mM reduced Glutathione, pH=8.0 in the elution buffer.
Storage Instruction	Store at -80°C. Aliquot to avoid repeated freezing and thawing.
Note	Best use within three months from the date of receipt of this protein.

Applications

- Enzyme-linked Immunoabsorbent Assay
- Western Blot (Recombinant protein)
- Antibody Production
- Protein Array

Gene Info — SRP68

Entrez GeneID [6730](#)

GeneBank Accession# [NM_014230](#)

Protein Accession# [NP_055045.2](#)

Gene Name SRP68

Gene Alias -

Gene Description signal recognition particle 68kDa

Omim ID [604858](#)

Gene Ontology [Hyperlink](#)

Gene Summary The signal recognition particle (SRP) is a ribonucleoprotein complex that transports secreted and membrane proteins to the endoplasmic reticulum for processing. The complex includes a 7S RNA and six protein subunits. This gene encodes the 68kDa component of the SRP. Alternatively spliced transcript variants have been identified, but their biological validity has not been determined. Three related pseudogenes are located within the Smith-Magenis syndrome region on chromosome 17. [provided by RefSeq]

Other Designations -

Pathway

- [Protein export](#)