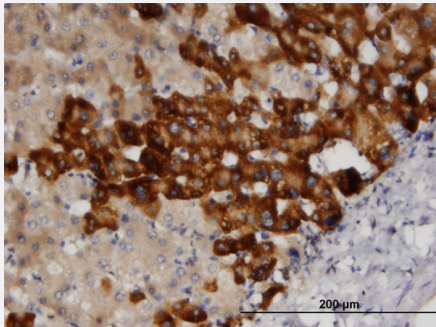


SRC monoclonal antibody (M01), clone 1B9

Catalog # H00006714-M01

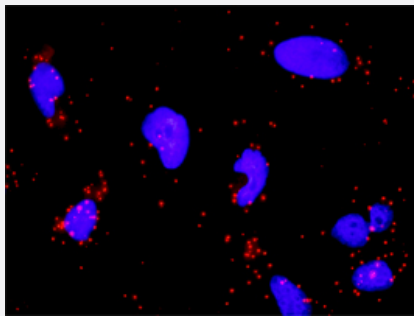
Size 100 ug

Applications



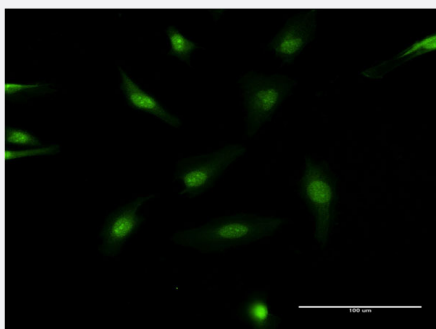
Immunohistochemistry (Formalin/PFA-fixed paraffin-embedded sections)

Immunoperoxidase of monoclonal antibody to SRC on formalin-fixed paraffin-embedded human liver. [antibody concentration 3 ug/ml]



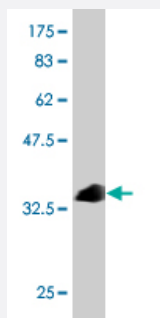
In situ Proximity Ligation Assay (Cell)

Proximity Ligation Analysis of protein-protein interactions between PTK2 and SRC. HeLa cells were stained with anti-PTK2 rabbit purified polyclonal 1:1200 and anti-SRC mouse monoclonal antibody 1:50. Each red dot represents the detection of protein-protein interaction complex, and nuclei were counterstained with DAPI (blue).



Immunofluorescence

Immunofluorescence of monoclonal antibody to SRC on HeLa cell . [antibody concentration 10 ug/ml]



Western Blot detection against Immunogen (35.90 KDa) .

Specification

Product Description	Mouse monoclonal antibody raised against a partial recombinant SRC.
Immunogen	SRC (AAH11566, 1 a.a. ~ 90 a.a) partial recombinant protein with GST tag. MW of the GST tag alone is 26 KDa.
Sequence	MGSNKS KPKDASQRRRSLEPAENVHGAGGGAFPASQTPSKPASADGHRGPSAAFAPAAAEPK LFGGFNSSDTVTSPQRAGPLAGGVTTFV
Host	Mouse
Reactivity	Human
Isotype	IgG2a Kappa
Quality Control Testing	Antibody Reactive Against Recombinant Protein. Western Blot detection against Immunogen (35.90 KDa) .
Storage Buffer	In 1x PBS, pH 7.4
Storage Instruction	Store at -20°C or lower. Aliquot to avoid repeated freezing and thawing.

Applications

- Western Blot (Recombinant protein)

[Protocol Download](#)

- Immunohistochemistry (Formalin/PFA-fixed paraffin-embedded sections)

Immunoperoxidase of monoclonal antibody to SRC on formalin-fixed paraffin-embedded human liver. [antibody concentration 3 ug/ml]

[Protocol Download](#)

- ELISA

- *In situ* Proximity Ligation Assay (Cell)

Proximity Ligation Analysis of protein-protein interactions between PTK2 and SRC. HeLa cells were stained with anti-PTK2 rabbit purified polyclonal 1:1200 and anti-SRC mouse monoclonal antibody 1:50. Each red dot represents the detection of protein-protein interaction complex, and nuclei were counterstained with DAPI (blue).

- Immunofluorescence

Immunofluorescence of monoclonal antibody to SRC on HeLa cell . [antibody concentration 10 ug/ml]

Gene Info — SRC

Entrez GeneID [6714](#)

GeneBank Accession# [BC011566](#)

Protein Accession# [AAH11566](#)

Gene Name SRC

Gene Alias ASV, SRC1, c-SRC, p60-Src

Gene Description v-src sarcoma (Schmidt-Ruppin A-2) viral oncogene homolog (avian)

Omim ID [190090](#)

Gene Ontology [Hyperlink](#)

Gene Summary This gene is highly similar to the v-src gene of Rous sarcoma virus. This proto-oncogene may play a role in the regulation of embryonic development and cell growth. The protein encoded by this gene is a tyrosine-protein kinase whose activity can be inhibited by phosphorylation by c-SRC kinase. Mutations in this gene could be involved in the malignant progression of colon cancer. Two transcript variants encoding the same protein have been found for this gene. [provided by RefSeq]

Other Designations OTTHUMP00000174476|OTTHUMP00000174477|proto-oncogene tyrosine-protein kinase SRC|protooncogene SRC, Rous sarcoma|tyrosine kinase pp60c-src|tyrosine-protein kinase SRC-1

Pathway

- [Adherens junction](#)
- [Endocytosis](#)
- [Epithelial cell signaling in Helicobacter pylori infection](#)

- [ErbB signaling pathway](#)
- [Focal adhesion](#)
- [Gap junction](#)
- [GnRH signaling pathway](#)
- [Tight junction](#)
- [VEGF signaling pathway](#)

Disease

- [Genetic Predisposition to Disease](#)
- [HIV Infections](#)
- [Thyroid Neoplasms](#)