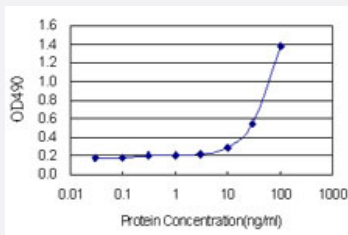


SPR (Human) Matched Antibody Pair

Catalog # H00006697-AP11

Size 1 Set

Applications



Sandwich ELISA detection sensitivity ranging from 3 ng/ml to 100 ng/ml.

Specification

Product Description	This antibody pair set comes with a matched antibody pair to detect and quantify the protein level of human SPR.
Reactivity	Human
Quality Control Testing	Standard curve using recombinant protein (H00006697-P01) as an analyte. Sandwich ELISA detection sensitivity ranging from 3 ng/ml to 100 ng/ml.
Supplied Product	Antibody pair set content: 1. Capture antibody: rabbit MaxPab® affinity purified polyclonal anti-SPR (100 ug) 2. Detection antibody: mouse monoclonal anti-SPR, IgG2a Kappa (20 ug) *Reagents are sufficient for at least 1-2 x 96 well plates using recommended protocols.
Storage Instruction	Store reagents of the antibody pair set at -20°C or lower. Please aliquot to avoid repeated freeze thaw cycle. Reagents should be returned to -20°C storage immediately after use.

Applications

- ELISA Pair (Recombinant protein)

[Protocol Download](#)

Gene Info — SPR

Entrez GeneID	6697
Gene Name	SPR
Gene Alias	SDR38C1
Gene Description	sepiapterin reductase (7,8-dihydrobiopterin:NADP+ oxidoreductase)
Omim ID	182125
Gene Ontology	Hyperlink
Gene Summary	This gene encodes an aldo-keto reductase that catalyzes the NADPH-dependent reduction of pteridine derivatives and is important in the biosynthesis of tetrahydrobiopterin (BH4). Mutations in this gene result in DOPA-responsive dystonia due to sepiapterin reductase deficiency. A pseudogene has been identified on chromosome 1. [provided by RefSeq]
Other Designations	short chain dehydrogenase/reductase family 38C, member 1

Pathway

- [Folate biosynthesis](#)
- [Metabolic pathways](#)

Disease

- [Autistic Disorder](#)
- [Bipolar Disorder](#)
- [Dystonic Disorders](#)
- [Genetic Predisposition to Disease](#)
- [Parkinson disease](#)
- [Parkinsonian Disorders](#)