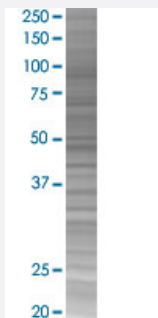


SPI1 293T Cell Transient Overexpression Lysate(Denatured)

Catalog # H00006688-T02

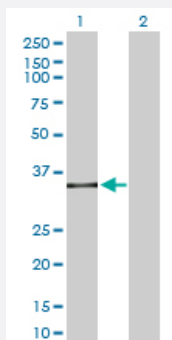
Size 100 uL

Applications



SDS-PAGE Gel

SPI1 transfected lysate.



Western Blot

Lane 1: SPI1 transfected lysate (30.40 KDa)

Lane 2: Non-transfected lysate.

Specification

Transfected Cell Line 293T

Plasmid pCMV-SPI1 full-length

Host Human

Theoretical MW (kDa) 30.4

Quality Control Testing Transient overexpression cell lysate was tested with Anti-SPI1 antibody ([H00006688-D01P](#)) by Western Blots.
 SDS-PAGE Gel
 SPI1 transfected lysate.
 Western Blot
 Lane 1: SPI1 transfected lysate (30.40 KDa)
 Lane 2: Non-transfected lysate.

Storage Buffer

1X Sample Buffer (50 mM Tris-HCl, 2% SDS, 10% glycerol, 300 mM 2-mercaptoethanol, 0.01% Bromophenol blue)

Storage Instruction

Store at -80°C. Aliquot to avoid repeated freezing and thawing.

Applications

- Western Blot

Gene Info — SPI1

Entrez GeneID[6688](#)**GeneBank Accession#**[NM_003120.1](#)**Protein Accession#**[ENSP00000227163](#)**Gene Name**

SPI1

Gene Alias

OF, PU.1, SFPI1, SPI-1, SPIA

Gene Description

spleen focus forming virus (SFFV) proviral integration oncogene spi1

Omim ID[165170](#)**Gene Ontology**[Hyperlink](#)**Gene Summary**

This gene encodes an ETS-domain transcription factor that activates gene expression during myeloid and B-lymphoid cell development. The nuclear protein binds to a purine-rich sequence known as the PU-box found near the promoters of target genes, and regulates their expression in coordination with other transcription factors and cofactors. The protein can also regulate alternative splicing of target genes. Multiple transcript variants encoding different isoforms have been found for this gene. [provided by RefSeq]

Other Designations

31 kDa transforming protein|SPI-1 proto-oncogene|hematopoietic transcription factor PU.1

Pathway

- [Acute myeloid leukemia](#)
- [Pathways in cancer](#)

Disease

- [Leukemia](#)