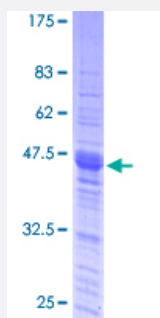


# SPI1 (Human) Recombinant Protein (Q01)

Catalog # H00006688-Q01

Size 10 ug, 25 ug

## Applications



## Specification

<b>Product Description</b>	Human SPI1 partial ORF ( NP_003111, 1 a.a. - 120 a.a.) recombinant protein with GST-tag at N-terminal.
<b>Sequence</b>	MEGFPLVPPPSSEDLVPYDLDLYQRQTHEYYPYLSSDGESHSDHYWDFPHPHVHSEFESFAENNF TELQSVQPPQLQQLYRHMELEQMHVLDTPMVPPHPSLGHQVSYLPRMCLQYPSLSP
<b>Host</b>	Wheat Germ (in vitro)
<b>Theoretical MW (kDa)</b>	38.94
<b>Preparation Method</b>	<a href="#">in vitro wheat germ expression system</a>
<b>Purification</b>	Glutathione Sepharose 4 Fast Flow
<b>Quality Control Testing</b>	12.5% SDS-PAGE Stained with Coomassie Blue.
<b>Storage Buffer</b>	50 mM Tris-HCl, 10 mM reduced Glutathione, pH=8.0 in the elution buffer.
<b>Storage Instruction</b>	Store at -80°C. Aliquot to avoid repeated freezing and thawing.
<b>Note</b>	Best use within three months from the date of receipt of this protein.

## Applications

- Enzyme-linked Immunoabsorbent Assay
- Western Blot (Recombinant protein)
- Antibody Production
- Protein Array

## Gene Info — SPI1

Entrez GeneID	<a href="#">6688</a>
GeneBank Accession#	<a href="#">NM_003120</a>
Protein Accession#	<a href="#">NP_003111</a>
Gene Name	SPI1
Gene Alias	OF, PU.1, SFPI1, SPI-1, SPIA
Gene Description	spleen focus forming virus (SFFV) proviral integration oncogene spi1
Omim ID	<a href="#">165170</a>
Gene Ontology	<a href="#">Hyperlink</a>
Gene Summary	This gene encodes an ETS-domain transcription factor that activates gene expression during myeloid and B-lymphoid cell development. The nuclear protein binds to a purine-rich sequence known as the PU-box found near the promoters of target genes, and regulates their expression in coordination with other transcription factors and cofactors. The protein can also regulate alternative splicing of target genes. Multiple transcript variants encoding different isoforms have been found for this gene. [provided by RefSeq]
Other Designations	31 kDa transforming protein SPI-1 proto-oncogene hematopoietic transcription factor PU.1

## Pathway

- [Acute myeloid leukemia](#)
- [Pathways in cancer](#)

## Disease

- [Leukemia](#)