

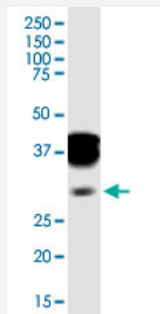
CX Grade

# SPI1 monoclonal antibody (M02J), clone 2G1

Catalog # H00006688-M02J

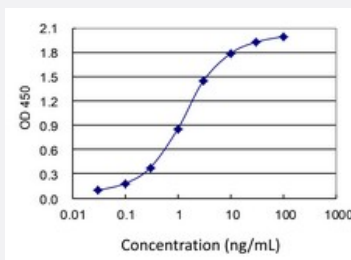
Size 100 ug

## Applications



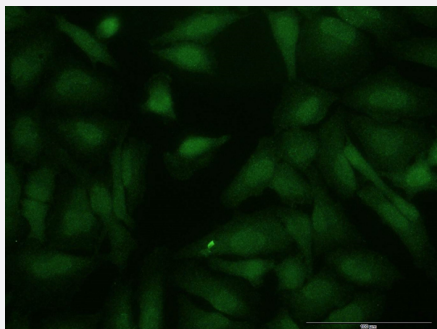
### Western Blot (Cell lysate)

SPI1 monoclonal antibody (M02J), clone 2G1. Western Blot analysis of SPI1 expression in Raw 264.7.



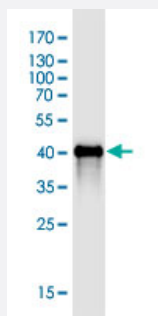
### Sandwich ELISA (Recombinant protein)

Detection limit for recombinant GST tagged SPI1 is 0.03 ng/ml as a capture antibody.



### Immunofluorescence

Immunofluorescence of monoclonal antibody to SPI1 on HeLa cell . [antibody concentration 10 ug/ml]



Western Blot detection against Immunogen (38.94 KDa) .

## Specification

<b>Product Description</b>	Mouse monoclonal antibody raised against a partial recombinant SPI1. This product is belong to Cell Culture Grade Antibody (CX Grade).
<b>Immunogen</b>	SPI1 (NP_003111.2, 1 a.a. ~ 120 a.a) partial recombinant protein with GST tag. MW of the GST tag alone is 26 KDa.
<b>Sequence</b>	MEGFPLVPPPSDELVPYDLDLYQRQTHEYYPYLSSDGESHSDHYWDFHPHHVHSEFESFAENNF TELQSVQPPQLQLYRHMELQMHVLDTPMVPPHPSLGHQVSYLPRMCLQYPSLSP
<b>Host</b>	Mouse
<b>Reactivity</b>	Human, Mouse
<b>Preparation Method</b>	Cell Culture Production
<b>Isotype</b>	IgG1 Kappa
<b>Quality Control Testing</b>	Antibody Reactive Against Recombinant Protein. Western Blot detection against Immunogen (38.94 KDa) .
<b>Storage Buffer</b>	In 1x PBS, pH 7.4
<b>Storage Instruction</b>	Store at -20°C or lower. Aliquot to avoid repeated freezing and thawing.

## Applications

- Western Blot (Cell lysate)

SPI1 monoclonal antibody (M02J), clone 2G1. Western Blot analysis of SPI1 expression in Raw 264.7.

[Protocol Download](#)

- Western Blot (Recombinant protein)

[Protocol Download](#)

- Sandwich ELISA (Recombinant protein)

Detection limit for recombinant GST tagged SPI1 is 0.03 ng/ml as a capture antibody.

[Protocol Download](#)

- ELISA

- Immunofluorescence

Immunofluorescence of monoclonal antibody to SPI1 on HeLa cell . [antibody concentration 10 ug/ml]

## Gene Info — SPI1

Entrez GeneID [6688](#)

GeneBank Accession# [NM\\_003120.2](#)

Protein Accession# [NP\\_003111.2](#)

Gene Name SPI1

Gene Alias OF, PU.1, SFPI1, SPI-1, SPI-A

Gene Description spleen focus forming virus (SFFV) proviral integration oncogene spi 1

Omim ID [165170](#)

Gene Ontology [Hyperlink](#)

**Gene Summary** This gene encodes an ETS-domain transcription factor that activates gene expression during myeloid and B-lymphoid cell development. The nuclear protein binds to a purine-rich sequence known as the PU-box found near the promoters of target genes, and regulates their expression in coordination with other transcription factors and cofactors. The protein can also regulate alternative splicing of target genes. Multiple transcript variants encoding different isoforms have been found for this gene. [provided by RefSeq]

**Other Designations** 31 kDa transforming protein|SPI-1 proto-oncogene|hematopoietic transcription factor PU.1

## Pathway

- [Acute myeloid leukemia](#)

- [Pathways in cancer](#)

## Disease

- [Leukemia](#)