

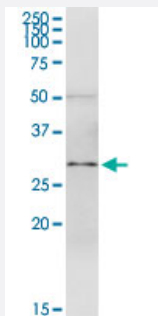
MaxPab®

SPI1 purified MaxPab rabbit polyclonal antibody (D01P)

Catalog # H00006688-D01P

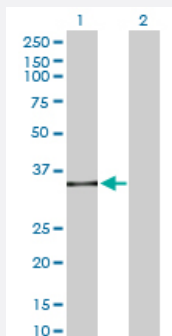
Size 100 ug

Applications



Western Blot (Tissue lysate)

SPI1 MaxPab rabbit polyclonal antibody. Western Blot analysis of SPI1 expression in human stomach.



Western Blot (Transfected lysate)

Western Blot analysis of SPI1 expression in transfected 293T cell line ([H00006688-T02](#)) by SPI1 MaxPab polyclonal antibody.

Lane 1: SPI1 transfected lysate(30.40 KDa).

Lane 2: Non-transfected lysate.

Specification

Product Description

Rabbit polyclonal antibody raised against a full-length human SPI1 protein.

Immunogen

SPI1 (ENSP00000227163, 1 a.a. ~ 264 a.a) full-length human protein.

Sequence

MEGFPLVPPPSDELVPYDLDLYQRQTHEYYPYLSSDGESHSDHYWDFHPHHVHSEFESFAENNF
TELQSVQPPQLQQLYRHMELQMHVLDTPMVPPHPSLGHQVSYLPRMCLQYPSLSPAQPSSDE
EEGERQSPPLEVSDGEADGLEPGPGLLPGETGSKKKIRLYQFLDLLRSGDMKDSMWVVDKDK
GTFQFSSKHKEALHRWGIQKGNRKKMTYQKMARALRNYGKTGEVKKVKKLTYQFSGEVLGRG
GLAERRHPPH

Host

Rabbit

Reactivity	Human
Quality Control Testing	Antibody reactive against mammalian transfected lysate.
Storage Buffer	In 1x PBS, pH 7.4
Storage Instruction	Store at -20°C or lower. Aliquot to avoid repeated freezing and thawing.

Applications

- Western Blot (Tissue lysate)

SPI1 MaxPab rabbit polyclonal antibody. Western Blot analysis of SPI1 expression in human stomach.

[Protocol Download](#)

- Western Blot (Transfected lysate)

Western Blot analysis of SPI1 expression in transfected 293T cell line ([H00006688-T02](#)) by SPI1 MaxPab polyclonal antibody.

Lane 1: SPI1 transfected lysate(30.40 KDa).

Lane 2: Non-transfected lysate.

[Protocol Download](#)

Gene Info — SPI1

Entrez GeneID	6688
GeneBank Accession#	NM_003120.1
Protein Accession#	ENSP00000227163
Gene Name	SPI1
Gene Alias	OF, PU.1, SFP11, SPI-1, SPI-A
Gene Description	spleen focus forming virus (SFFV) proviral integration oncogene spi1
Omim ID	165170
Gene Ontology	Hyperlink

Gene Summary

This gene encodes an ETS-domain transcription factor that activates gene expression during myeloid and B-lymphoid cell development. The nuclear protein binds to a purine-rich sequence known as the PU-box found near the promoters of target genes, and regulates their expression in coordination with other transcription factors and cofactors. The protein can also regulate alternative splicing of target genes. Multiple transcript variants encoding different isoforms have been found for this gene. [provided by RefSeq]

Other Designations

31 kDa transforming protein|SPI-1 proto-oncogene|hematopoietic transcription factor PU.1

Pathway

- [Acute myeloid leukemia](#)
- [Pathways in cancer](#)

Disease

- [Leukemia](#)