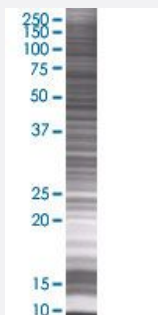


SP2 293T Cell Transient Overexpression Lysate(Denatured)

Catalog # H00006668-T01

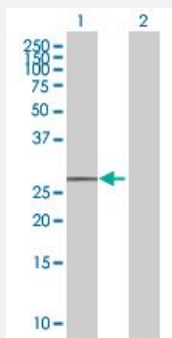
Size 100 uL

Applications



SDS-PAGE Gel

SP2 transfected lysate.



Western Blot

Lane 1: SP2 transfected lysate (27.5 KDa)

Lane 2: Non-transfected lysate.

Specification

Transfected Cell Line	293T
Plasmid	pCMV-SP2 full-length
Host	Human
Theoretical MW (kDa)	27.5
Interspecies Antigen Sequence	Mouse (89); Rat (77)

Quality Control Testing

Transient overexpression cell lysate was tested with Anti-SP2 antibody ([H00006668-B01](#)) by Western Blots.
SDS-PAGE Gel
SP2 transfected lysate.
Western Blot
Lane 1: SP2 transfected lysate (27.5 KDa)
Lane 2: Non-transfected lysate.

Storage Buffer

1X Sample Buffer (50 mM Tris-HCl, 2% SDS, 10% glycerol, 300 mM 2-mercaptoethanol, 0.01% Bromophenol blue)

Storage Instruction

Store at -80°C. Aliquot to avoid repeated freezing and thawing.

Applications

- Western Blot

Gene Info — SP2

Entrez GeneID[6668](#)**GeneBank Accession#**[BC005914.1](#)**Protein Accession#**[AAH05914.1](#)**Gene Name**

SP2

Gene Alias

-

Gene Description

Sp2 transcription factor

Omim ID[601801](#)**Gene Ontology**[Hyperlink](#)**Gene Summary**

This gene encodes a member of the Sp subfamily of Sp/XKLF transcription factors. Sp family proteins are sequence-specific DNA-binding proteins characterized by an amino-terminal trans-activation domain and three carboxy-terminal zinc finger motifs. This protein contains the least conserved DNA-binding domain within the Sp subfamily of proteins, and its DNA sequence specificity differs from the other Sp proteins. It localizes primarily within subnuclear foci associated with the nuclear matrix, and can activate or in some cases repress expression from different promoters. [provided by RefSeq]

Other Designations

-