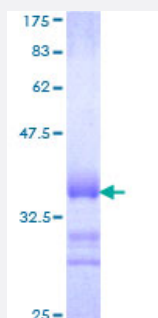


SOX12 (Human) Recombinant Protein (Q01)

Catalog # H00006666-Q01

Size 25 ug, 10 ug

Applications



Specification

Product Description	Human SOX12 partial ORF (NP_008874, 252 a.a. - 313 a.a.) recombinant protein with GST-tag at N-terminal.
Sequence	LGFLSRLPPGPAGLDCSALDRDPLQPPSGTSHFEFPDYCTPEVTEMIAGDWRPSSIADLVF
Host	Wheat Germ (in vitro)
Theoretical MW (kDa)	32.56
Preparation Method	in vitro wheat germ expression system
Purification	Glutathione Sepharose 4 Fast Flow
Quality Control Testing	12.5% SDS-PAGE Stained with Coomassie Blue.
Storage Buffer	50 mM Tris-HCl, 10 mM reduced Glutathione, pH=8.0 in the elution buffer.
Storage Instruction	Store at -80°C. Aliquot to avoid repeated freezing and thawing.
Note	Best use within three months from the date of receipt of this protein.

Applications

- Enzyme-linked Immunoabsorbent Assay
- Western Blot (Recombinant protein)
- Antibody Production
- Protein Array

Gene Info — SOX12

Entrez GeneID [6666](#)

GeneBank Accession# [NM_006943](#)

Protein Accession# [NP_008874](#)

Gene Name SOX12

Gene Alias SOX22

Gene Description SRY (sex determining region Y)-box 12

Omim ID [601947](#)

Gene Ontology [Hyperlink](#)

Gene Summary Members of the SOX family of transcription factors are characterized by the presence of a DNA-binding high mobility group (HMG) domain, homologous to the HMG box of sex-determining region Y (SRY). Forming a subgroup of the HMG domain superfamily, SOX proteins have been implicated in cell fate decisions in a diverse range of developmental processes. SOX transcription factors have diverse tissue-specific expression patterns during early development and have been proposed to act as target-specific transcription factors and/or as chromatin structure regulatory elements. The protein encoded by this gene was identified as a SOX family member based on conserved domains and its expression in various tissues suggests a role in both differentiation and maintenance of several cell types. [provided by RefSeq]

Other Designations SOX-22 protein|SRY (sex determining region Y)-box 22|SRY-related HMG-box gene 22

Publication Reference

- [SOX12 contributes to the activation of the JAK2/STAT3 pathway and malignant transformation of esophageal squamous cell carcinoma.](#)

Chunguang Li, Maoling Zhu, Ji Zhu, Qijue Lu, Bowen Shi, Bin Sun, Hezhong Chen.

Oncology Reports 2021 Jan; 45(1):129.

Application: Func, Human, Eca109, TE1 cells