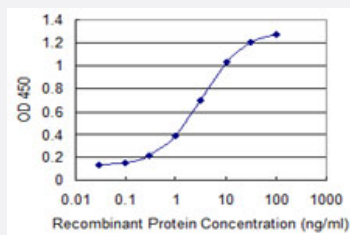


SOX12 monoclonal antibody (M09), clone 2D3

Catalog # H00006666-M09

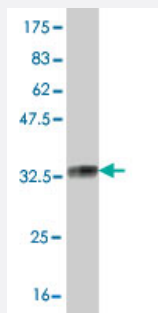
Size 100 ug

Applications



Sandwich ELISA (Recombinant protein)

Detection limit for recombinant GST tagged SOX12 is 0.1 ng/ml as a capture antibody.



Western Blot detection against Immunogen (32.56 KDa) .

Specification

Product Description	Mouse monoclonal antibody raised against a partial recombinant SOX12.
Immunogen	SOX12 (NP_008874, 252 a.a. ~ 313 a.a) partial recombinant protein with GST tag. MW of the GST tag alone is 26 KDa.
Sequence	LGFLSRLPPGPAGLDCSALDRDPDLQPPSGTSHFEFPDYCTPEVTEMIAGDWRPSSIADLVF
Host	Mouse
Reactivity	Human
Isotype	IgG2b Kappa

Quality Control Testing

Antibody Reactive Against Recombinant Protein.
Western Blot detection against Immunogen (32.56 KDa) .

Storage Buffer

In 1x PBS, pH 7.4

Storage Instruction

Store at -20°C or lower. Aliquot to avoid repeated freezing and thawing.

Applications

- Western Blot (Recombinant protein)

[Protocol Download](#)

- Sandwich ELISA (Recombinant protein)

Detection limit for recombinant GST tagged SOX12 is 0.1 ng/ml as a capture antibody.

[Protocol Download](#)

- ELISA

Gene Info — SOX12

Entrez GeneID

[6666](#)

GeneBank Accession#

[NM_006943](#)

Protein Accession#

[NP_008874](#)

Gene Name

SOX12

Gene Alias

SOX22

Gene Description

SRY (sex determining region Y)-box 12

Omim ID

[601947](#)

Gene Ontology

[Hyperlink](#)

Gene Summary

Members of the SOX family of transcription factors are characterized by the presence of a DNA-binding high mobility group (HMG) domain, homologous to the HMG box of sex-determining region Y (SRY). Forming a subgroup of the HMG domain superfamily, SOX proteins have been implicated in cell fate decisions in a diverse range of developmental processes. SOX transcription factors have diverse tissue-specific expression patterns during early development and have been proposed to act as target-specific transcription factors and/or as chromatin structure regulatory elements. The protein encoded by this gene was identified as a SOX family member based on conserved domains and its expression in various tissues suggests a role in both differentiation and maintenance of several cell types. [provided by RefSeq]

Other Designations

SOX-22 protein|SRY (sex determining region Y)-box 22|SRY-related HMG-box gene 22