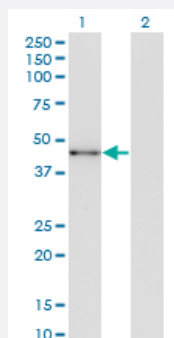


# SOX12 monoclonal antibody (M08), clone 4A7

Catalog # H00006666-M08

Size 100 ug

## Applications

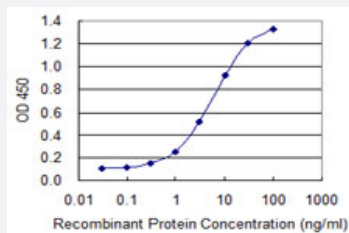


### Western Blot (Transfected lysate)

Western Blot analysis of SOX12 expression in transfected 293T cell line by SOX12 monoclonal antibody (M08), clone 4A7.

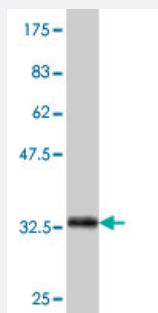
Lane 1: SOX12 transfected lysate (Predicted MW: 34.1 KDa).

Lane 2: Non-transfected lysate.



### Sandwich ELISA (Recombinant protein)

Detection limit for recombinant GST tagged SOX12 is 0.1 ng/ml as a capture antibody.



Western Blot detection against Immunogen (32.56 KDa) .

## Specification

### Product Description

Mouse monoclonal antibody raised against a partial recombinant SOX12.

Immunogen	SOX12 (NP_008874, 252 a.a. ~ 313 a.a) partial recombinant protein with GST tag. MW of the GST tag alone is 26 KDa.
Sequence	LGFLSRLPPGPAGLDCSALDRDPDLQPPSGTSHFEFPDYCTPEVTEMIAGDWRPSSIADLVF
Host	Mouse
Reactivity	Human
Isotype	IgG2a Kappa
Quality Control Testing	Antibody Reactive Against Recombinant Protein. Western Blot detection against Immunogen (32.56 KDa) .
Storage Buffer	In 1x PBS, pH 7.4
Storage Instruction	Store at -20°C or lower. Aliquot to avoid repeated freezing and thawing.

## Applications

- Western Blot (Transfected lysate)

Western Blot analysis of SOX12 expression in transfected 293T cell line by SOX12 monoclonal antibody (M08), clone 4A7.

Lane 1: SOX12 transfected lysate (Predicted MW: 34.1 KDa).

Lane 2: Non-transfected lysate.

[Protocol Download](#)

- Western Blot (Recombinant protein)

[Protocol Download](#)

- Sandwich ELISA (Recombinant protein)

Detection limit for recombinant GST tagged SOX12 is 0.1 ng/ml as a capture antibody.

[Protocol Download](#)

- ELISA

## Gene Info — SOX12

Entrez GeneID	<a href="#">6666</a>
GeneBank Accession#	<a href="#">NM_006943</a>

Protein Accession#	<a href="#">NP_008874</a>
Gene Name	SOX12
Gene Alias	SOX22
Gene Description	SRY (sex determining region Y)-box 12
Omim ID	<a href="#">601947</a>
Gene Ontology	<a href="#">Hyperlink</a>
Gene Summary	<p>Members of the SOX family of transcription factors are characterized by the presence of a DNA-binding high mobility group (HMG) domain, homologous to the HMG box of sex-determining region Y (SRY). Forming a subgroup of the HMG domain superfamily, SOX proteins have been implicated in cell fate decisions in a diverse range of developmental processes. SOX transcription factors have diverse tissue-specific expression patterns during early development and have been proposed to act as target-specific transcription factors and/or as chromatin structure regulatory elements. The protein encoded by this gene was identified as a SOX family member based on conserved domains and its expression in various tissues suggests a role in both differentiation and maintenance of several cell types. [provided by RefSeq]</p>
Other Designations	SOX-22 protein SRY (sex determining region Y)-box 22 SRY-related HMG-box gene 22