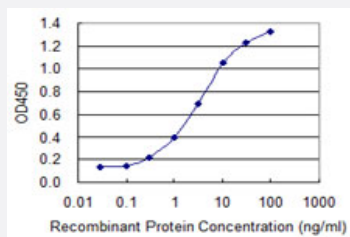


# SOX12 monoclonal antibody (M01), clone 2C4

Catalog # H00006666-M01

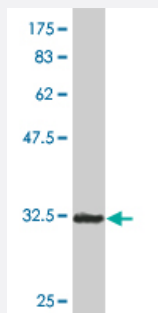
Size 100 ug

## Applications



### Sandwich ELISA (Recombinant protein)

Detection limit for recombinant GST tagged SOX12 is 0.1 ng/ml as a capture antibody.



Western Blot detection against Immunogen (32.56 KDa) .

## Specification

Product Description	Mouse monoclonal antibody raised against a partial recombinant SOX12.
Immunogen	SOX12 (NP_008874, 252 a.a. ~ 313 a.a) partial recombinant protein with GST tag. MW of the GST tag alone is 26 KDa.
Sequence	LGFLSRLPPGPAGLDCSALDRDPLQPPSGTSHFEFPDYCTPEVTEMIAGDWRPSSIADLVF
Host	Mouse
Reactivity	Human
Isotype	IgG2b Kappa

**Quality Control Testing**

Antibody Reactive Against Recombinant Protein.  
Western Blot detection against Immunogen (32.56 KDa) .

**Storage Buffer**

In 1x PBS, pH 7.4

**Storage Instruction**

Store at -20°C or lower. Aliquot to avoid repeated freezing and thawing.

## Applications

- Western Blot (Recombinant protein)

[Protocol Download](#)

- Sandwich ELISA (Recombinant protein)

Detection limit for recombinant GST tagged SOX12 is 0.1 ng/ml as a capture antibody.

[Protocol Download](#)

- ELISA

## Gene Info — SOX12

**Entrez GeneID**

[6666](#)

**GeneBank Accession#**

[NM\\_006943](#)

**Protein Accession#**

[NP\\_008874](#)

**Gene Name**

SOX12

**Gene Alias**

SOX22

**Gene Description**

SRY (sex determining region Y)-box 12

**Omim ID**

[601947](#)

**Gene Ontology**

[Hyperlink](#)

**Gene Summary**

Members of the SOX family of transcription factors are characterized by the presence of a DNA-binding high mobility group (HMG) domain, homologous to the HMG box of sex-determining region Y (SRY). Forming a subgroup of the HMG domain superfamily, SOX proteins have been implicated in cell fate decisions in a diverse range of developmental processes. SOX transcription factors have diverse tissue-specific expression patterns during early development and have been proposed to act as target-specific transcription factors and/or as chromatin structure regulatory elements. The protein encoded by this gene was identified as a SOX family member based on conserved domains and its expression in various tissues suggests a role in both differentiation and maintenance of several cell types. [provided by RefSeq]

**Other Designations**

SOX-22 protein|SRY (sex determining region Y)-box 22|SRY-related HMG-box gene 22