

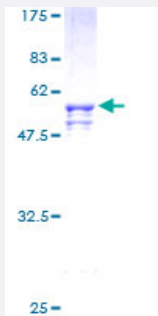
Full-Length

SOX15 (Human) Recombinant Protein (P01)

Catalog # H00006665-P01

Size 10 ug, 25 ug

Applications



Specification

Product Description	Human SOX15 full-length ORF (AAH00985, 1 a.a. - 233 a.a.) recombinant protein with GST-tag at N-terminal.
Sequence	MALPGSSQDQAWSLEPPAATAAASSSSGPQEREGAGSPAAPGTLPLEKVKRPMNAFMVWSSA QRRQMAQQNPKMHNSEISKRLGAQWKLLDEDEKRPFVEEAKRLRARHLRDYPDYKYRPRRKAK SSGAGPSRCGQGRGNLASGGPLWGPGYATTQPSRGFGYRPPSYSTAYLPGSYGSSHCKLEAPS PCSLPQSDPRLQGELLPTYTHYLP GSPTPYNPPLAGAPMPLTHL
Host	Wheat Germ (in vitro)
Theoretical MW (kDa)	51.37
Interspecies Antigen Sequence	Mouse (75)
Preparation Method	in vitro wheat germ expression system
Purification	Glutathione Sepharose 4 Fast Flow
Quality Control Testing	12.5% SDS-PAGE Stained with Coomassie Blue.
Storage Buffer	50 mM Tris-HCl, 10 mM reduced Glutathione, pH=8.0 in the elution buffer.
Storage Instruction	Store at -80°C. Aliquot to avoid repeated freezing and thawing.

Note

Best use within three months from the date of receipt of this protein.

Applications

- Enzyme-linked Immunoabsorbent Assay
- Western Blot (Recombinant protein)
- Antibody Production
- Protein Array

Gene Info — SOX15

Entrez GeneID [6665](#)**GeneBank Accession#** [BC000985](#)**Protein Accession#** [AAH00985](#)**Gene Name** SOX15**Gene Alias** SOX20, SOX26, SOX27**Gene Description** SRY (sex determining region Y)-box 15**Omim ID** [601297](#)**Gene Ontology** [Hyperlink](#)

Gene Summary This gene encodes a member of the SOX (SRY-related HMG-box) family of transcription factors involved in the regulation of embryonic development and in the determination of the cell fate. The encoded protein may act as a transcriptional regulator after forming a protein complex with other proteins. [provided by RefSeq]

Other Designations SRY (sex determining region Y)-box 20|SRY-box 15