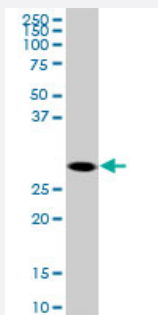


SOX15 monoclonal antibody (M12), clone 1B3

Catalog # H00006665-M12

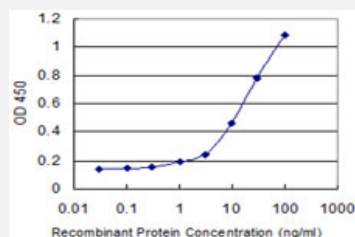
Size 100 ug

Applications



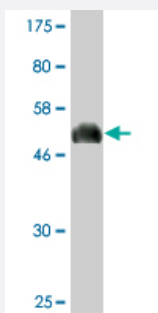
Western Blot (Cell lysate)

SOX15 monoclonal antibody (M12), clone 1B3. Western Blot analysis of SOX15 expression in A-431 (Cat # L015V1).



Sandwich ELISA (Recombinant protein)

Detection limit for recombinant GST tagged SOX15 is 0.3 ng/ml as a capture antibody.



Western Blot detection against Immunogen (51.37 KDa) .

Specification

Product Description

Mouse monoclonal antibody raised against a full-length recombinant SOX15.

Immunogen	SOX15 (AAH00985, 1 a.a. ~ 233 a.a) full-length recombinant protein with GST tag. MW of the GST tag alone is 26 KDa.
Sequence	MALPGSSQDQAWSLEPPAATAAAASSSSGPQEREGAGSPAAPGTLPLEKVKRPMNAFMVWSSA QRRQMAQQNPKMHNSEISKRLGAQWKLLDEDEKRPFVEEAKRLRARHLRDYPDYKYRPRRKAK SSGAGPSRCGQGRGNLASGGPLWGPGYATTQPSRGGYRPPSYSTAYLPGSYGSSHCKLEAPS PCSLPQSDPRLQGELLPTYTHYLPGPSPTPNPPLAGAPMPLTHL
Host	Mouse
Reactivity	Human
Interspecies Antigen Sequence	Mouse (75)
Isotype	IgG2a Kappa
Quality Control Testing	Antibody Reactive Against Recombinant Protein. Western Blot detection against Immunogen (51.37 KDa) .
Storage Buffer	In 1x PBS, pH 7.4
Storage Instruction	Store at -20°C or lower. Aliquot to avoid repeated freezing and thawing.

Applications

- Western Blot (Cell lysate)

SOX15 monoclonal antibody (M12), clone 1B3. Western Blot analysis of SOX15 expression in A-431 (Cat # L015V1).

[Protocol Download](#)

- Western Blot (Recombinant protein)

[Protocol Download](#)

- Sandwich ELISA (Recombinant protein)

Detection limit for recombinant GST tagged SOX15 is 0.3 ng/ml as a capture antibody.

[Protocol Download](#)

- ELISA

Gene Info — SOX15

Entrez GeneID	6665
GeneBank Accession#	BC000985
Protein Accession#	AAH00985
Gene Name	SOX15
Gene Alias	SOX20, SOX26, SOX27
Gene Description	SRY (sex determining region Y)-box 15
Omim ID	601297
Gene Ontology	Hyperlink
Gene Summary	This gene encodes a member of the SOX (SRY-related HMG-box) family of transcription factors involved in the regulation of embryonic development and in the determination of the cell fate. The encoded protein may act as a transcriptional regulator after forming a protein complex with other proteins. [provided by RefSeq]
Other Designations	SRY (sex determining region Y)-box 20 SRY-box 15