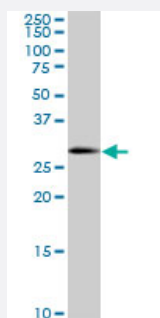


# SOX15 monoclonal antibody (M02), clone 2C1

Catalog # H00006665-M02

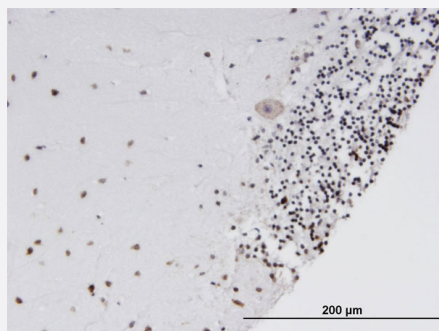
Size 100 ug

## Applications



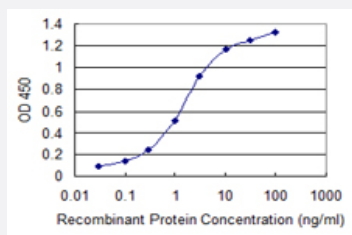
### Western Blot (Cell lysate)

SOX15 monoclonal antibody (M02), clone 2C1. Western Blot analysis of SOX15 expression in Hela S3 NE ( Cat # L013V3 ).



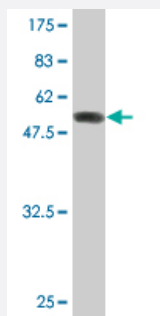
### Immunohistochemistry (Formalin/PFA-fixed paraffin-embedded sections)

Immunoperoxidase of monoclonal antibody to SOX15 on formalin-fixed paraffin-embedded human cerebellum. [antibody concentration 3 ug/ml]



### Sandwich ELISA (Recombinant protein)

Detection limit for recombinant GST tagged SOX15 is 0.03 ng/ml as a capture antibody.



Western Blot detection against Immunogen (51.37 KDa) .

## Specification

<b>Product Description</b>	Mouse monoclonal antibody raised against a full-length recombinant SOX15.
<b>Immunogen</b>	SOX15 (AAH00985, 1 a.a. ~ 233 a.a) full-length recombinant protein with GST tag. MW of the GST tag alone is 26 KDa.
<b>Sequence</b>	MALPGSSQDQAWSLEPPAATAAASSSSGPQEREGAGSPAAPGTLPLEKVKRPMNAFMVWSSA QRRQMAQQNPKMHNSEISKRLGAQWKLLDEDEKRPFVEEAKRLRARHLRDYPDYKYRPRRKAK SSGAGPSRCGQGRGNLASGGPLWGPYATTQPSRGFGYRPPSYSTAYLPGSYGSSHCKLEAPS PCSLPQSDPRLQGELLPTYTHYLPPGSPTPYNPPLAGAPMPLTHL
<b>Host</b>	Mouse
<b>Reactivity</b>	Human
<b>Interspecies Antigen Sequence</b>	Mouse (75)
<b>Isotype</b>	IgG2a Kappa
<b>Quality Control Testing</b>	Antibody Reactive Against Recombinant Protein. Western Blot detection against Immunogen (51.37 KDa) .
<b>Storage Buffer</b>	In 1x PBS, pH 7.4
<b>Storage Instruction</b>	Store at -20°C or lower. Aliquot to avoid repeated freezing and thawing.

## Applications

- Western Blot (Cell lysate)

SOX15 monoclonal antibody (M02), clone 2C1. Western Blot analysis of SOX15 expression in Hela S3 NE ( Cat # L013V3 ).

[Protocol Download](#)

- Western Blot (Recombinant protein)

[Protocol Download](#)

- Immunohistochemistry (Formalin/PFA-fixed paraffin-embedded sections)

Immunoperoxidase of monoclonal antibody to SOX15 on formalin-fixed paraffin-embedded human cerebellum. [antibody concentration 3 ug/ml]

[Protocol Download](#)

- Sandwich ELISA (Recombinant protein)

Detection limit for recombinant GST tagged SOX15 is 0.03 ng/ml as a capture antibody.

[Protocol Download](#)

- ELISA

## Gene Info — SOX15

Entrez GeneID [6665](#)

GeneBank Accession# [BC000985](#)

Protein Accession# [AAH00985](#)

Gene Name SOX15

Gene Alias SOX20, SOX26, SOX27

Gene Description SRY (sex determining region Y)-box 15

Omim ID [601297](#)

Gene Ontology [Hyperlink](#)

**Gene Summary** This gene encodes a member of the SOX (SRY-related HMG-box) family of transcription factors involved in the regulation of embryonic development and in the determination of the cell fate. The encoded protein may act as a transcriptional regulator after forming a protein complex with other proteins. [provided by RefSeq]

**Other Designations** SRY (sex determining region Y)-box 20|SRY-box 15