

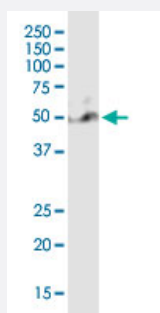
CX Grade

# SOX9 monoclonal antibody (M02J), clone 3C10

Catalog # H00006662-M02J

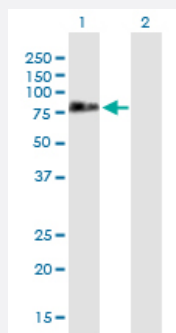
Size 100 ug

## Applications



### Western Blot (Cell lysate)

SOX9 monoclonal antibody (M02J), clone 3C10. Western Blot analysis of SOX9 expression in HepG2.

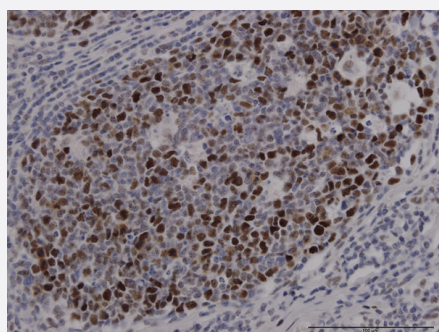


### Western Blot (Transfected lysate)

Western Blot analysis of SOX9 expression in transfected 293T cell line by SOX9 monoclonal antibody (M02J), clone 3C10.

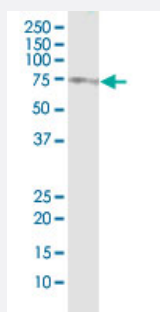
Lane 1: SOX9 transfected lysate (Predicted MW: 56.1 KDa).

Lane 2: Non-transfected lysate.



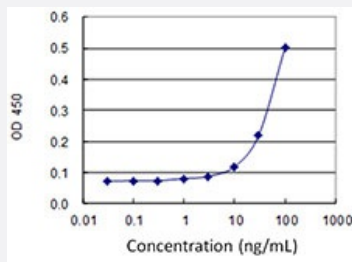
### Immunohistochemistry (Formalin/PFA-fixed paraffin-embedded sections)

Immunoperoxidase of monoclonal antibody to SOX9 on formalin-fixed paraffin-embedded human tonsil. [antibody concentration 0.7 ug/ml]



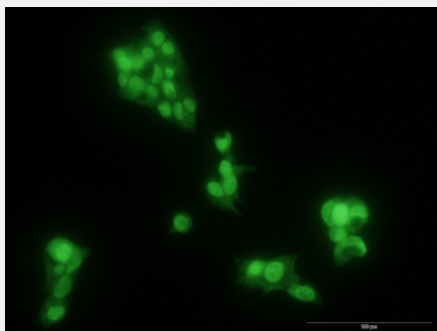
### Immunoprecipitation

Immunoprecipitation of SOX9 transfected lysate using anti-SOX9 monoclonal antibody and Protein A Magnetic Bead, and immunoblotted with SOX9 MaxPab rabbit polyclonal antibody.



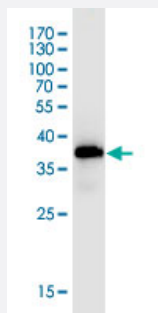
## Sandwich ELISA (Recombinant protein)

Detection limit for recombinant GST tagged SOX9 is 3 ng/ml as a capture antibody.



## Immunofluorescence

Immunofluorescence of monoclonal antibody to SOX9 on HepG2 cell .  
[antibody concentration 10 ug/ml]



Western Blot detection against Immunogen (37.84 KDa) .

## Specification

### Product Description

Mouse monoclonal antibody raised against a partial recombinant SOX9.  
This product is belong to Cell Culture Grade Antibody (CX Grade).

### Immunogen

SOX9 (NP\_000337, 400 a.a. ~ 509 a.a) partial recombinant protein with GST tag. MW of the GST tag alone is 26 KDa.

### Sequence

EQLSPSHYSEQQQHSPQQIAYSFNLPHYSPSYPPITRSQYDYTDHQNSSSYSHAAGQGTGLYST  
FTYMNPAQRPMYTPADTSGVPSIPQTHSPQHWEPVYTQLTRP

### Host

Mouse

### Reactivity

Human

### Preparation Method

Cell Culture Production

### Isotype

IgG2a Kappa

**Quality Control Testing**

Antibody Reactive Against Recombinant Protein.  
Western Blot detection against Immunogen (37.84 KDa) .

**Storage Buffer**

In 1x PBS, pH 7.4

**Storage Instruction**

Store at -20°C or lower. Aliquot to avoid repeated freezing and thawing.

## Applications

- Western Blot (Cell lysate)

SOX9 monoclonal antibody (M02J), clone 3C10. Western Blot analysis of SOX9 expression in HepG2.

[Protocol Download](#)

- Western Blot (Transfected lysate)

Western Blot analysis of SOX9 expression in transfected 293T cell line by SOX9 monoclonal antibody (M02J), clone 3C10.

Lane 1: SOX9 transfected lysate (Predicted MW: 56.1 KDa).

Lane 2: Non-transfected lysate.

[Protocol Download](#)

- Western Blot (Recombinant protein)

[Protocol Download](#)

- Immunohistochemistry (Formalin/PFA-fixed paraffin-embedded sections)

Immunoperoxidase of monoclonal antibody to SOX9 on formalin-fixed paraffin-embedded human tonsil. [antibody concentration 0.7 ug/ml]

[Protocol Download](#)

- Immunoprecipitation

Immunoprecipitation of SOX9 transfected lysate using anti-SOX9 monoclonal antibody and Protein A Magnetic Bead, and immunoblotted with SOX9 MaxPab rabbit polyclonal antibody.

[Protocol Download](#)

- Sandwich ELISA (Recombinant protein)

Detection limit for recombinant GST tagged SOX9 is 3 ng/ml as a capture antibody.

[Protocol Download](#)

- ELISA

- Immunofluorescence

Immunofluorescence of monoclonal antibody to SOX9 on HepG2 cell . [antibody concentration 10 ug/ml]

## Gene Info — SOX9

**Entrez GeneID** [6662](#)

**GeneBank Accession#** [NM\\_000346](#)

**Protein Accession#** [NP\\_000337](#)

**Gene Name** SOX9

**Gene Alias** CMD1, CMPD1, SRA1

**Gene Description** SRY (sex determining region Y)-box 9

**Omim ID** [114290 608160](#)

**Gene Ontology** [Hyperlink](#)

**Gene Summary** The protein encoded by this gene recognizes the sequence CCTTGAG along with other members of the HMG-box class DNA-binding proteins. It acts during chondrocyte differentiation and, with steroidogenic factor 1, regulates transcription of the anti-Muellerian hormone (AMH) gene. Deficiencies lead to the skeletal malformation syndrome campomelic dysplasia, frequently with sex reversal. [provided by RefSeq]

**Other Designations** SRY (sex determining region Y)-box 9 (campomelic dysplasia, autosomal sex-reversal)|SRY (sex-determining region Y)-box 9 (campomelic dysplasia, autosomal sex-reversal)|SRY (sex-determining region Y)-box 9 protein|campomelic dysplasia, autosomal sex-revers

## Disease

- [Cleft Lip](#)
- [Cleft Palate](#)
- [Genetic Predisposition to Disease](#)
- [Hypospadias](#)
- [Ovarian Neoplasms](#)
- [Sex determination](#)