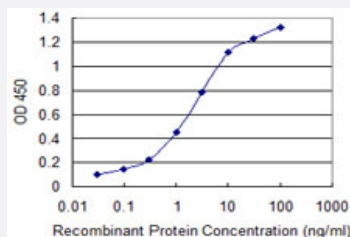


SOX4 monoclonal antibody (M02), clone 1E5

Catalog # H00006659-M02

Size 100 ug

Applications



Sandwich ELISA (Recombinant protein)

Detection limit for recombinant GST tagged SOX4 is 0.03 ng/ml as a capture antibody.

Specification

Product Description	Mouse monoclonal antibody raised against a partial recombinant SOX4.
Immunogen	SOX4 (NP_003098, 45 a.a. ~ 136 a.a) partial recombinant protein with GST tag. MW of the GST tag alone is 26 KDa.
Sequence	KADDP SWCKTPSGHIK RPMNAFMVWSQIERRKIMEQSPDMHNAEISKRLGKRWKLKDSKIPFI REAERLRLKHMADYPDYKYRPRKKVKS
Host	Mouse
Reactivity	Human
Interspecies Antigen Sequence	Mouse (99); Rat (99)
Isotype	IgG1 Kappa
Quality Control Testing	Antibody Reactive Against Recombinant Protein.
Storage Buffer	In 1x PBS, pH 7.4
Storage Instruction	Store at -20°C or lower. Aliquot to avoid repeated freezing and thawing.

Applications

- Sandwich ELISA (Recombinant protein)

Detection limit for recombinant GST tagged SOX4 is 0.03 ng/ml as a capture antibody.

[Protocol Download](#)

- ELISA

Gene Info — SOX4

Entrez GeneID [6659](#)

GeneBank Accession# [NM_003107](#)

Protein Accession# [NP_003098](#)

Gene Name SOX4

Gene Alias EVI16

Gene Description SRY (sex determining region Y)-box 4

Omim ID [184430](#)

Gene Ontology [Hyperlink](#)

Gene Summary This intronless gene encodes a member of the SOX (SRY-related HMG-box) family of transcription factors involved in the regulation of embryonic development and in the determination of the cell fate. The encoded protein may act as a transcriptional regulator after forming a protein complex with other proteins, such as syndecan binding protein (syntenin). The protein may function in the apoptosis pathway leading to cell death as well as to tumorigenesis and may mediate downstream effects of parathyroid hormone (PTH) and PTH-related protein (PTHrP) in bone development. The solution structure has been resolved for the HMG-box of a similar mouse protein. [provided by RefSeq]

Other Designations OTTHUMP00000039358|SRY-related HMG-box gene 4|ecotropic viral integration site 16