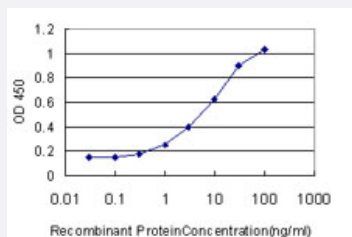


# SOX4 monoclonal antibody (M01), clone 2C5

Catalog # H00006659-M01

Size 50 ug

## Applications



### Sandwich ELISA (Recombinant protein)

Detection limit for recombinant GST tagged SOX4 is approximately 0.3ng/ml as a capture antibody.

## Specification

<b>Product Description</b>	Mouse monoclonal antibody raised against a partial recombinant SOX4.
<b>Immunogen</b>	SOX4 (NP_003098, 45 a.a. ~ 136 a.a) partial recombinant protein with GST tag. MW of the GST tag alone is 26 KDa.
<b>Sequence</b>	KADDP <del>SWCKTPSGHIK</del> RPMNAFMVWSQIERRKIMEQSPDMHNAEISKRLGKRWKLKDSKIPFI REAERLRLKHMADYPDYKYRPRKKVKS
<b>Host</b>	Mouse
<b>Reactivity</b>	Human
<b>Interspecies Antigen Sequence</b>	Mouse (99); Rat (99)
<b>Isotype</b>	IgG1 Kappa
<b>Quality Control Testing</b>	Antibody Reactive Against Recombinant Protein.
<b>Storage Buffer</b>	In 1x PBS, pH 7.4
<b>Storage Instruction</b>	Store at -20°C or lower. Aliquot to avoid repeated freezing and thawing.

## Applications

- Sandwich ELISA (Recombinant protein)

Detection limit for recombinant GST tagged SOX4 is approximately 0.3ng/ml as a capture antibody.

[Protocol Download](#)

- ELISA

## Gene Info — SOX4

Entrez GeneID	<a href="#">6659</a>
---------------	----------------------

GeneBank Accession#	<a href="#">NM_003107</a>
---------------------	---------------------------

Protein Accession#	<a href="#">NP_003098</a>
--------------------	---------------------------

Gene Name	SOX4
-----------	------

Gene Alias	EVI16
------------	-------

Gene Description	SRY (sex determining region Y)-box 4
------------------	--------------------------------------

Omim ID	<a href="#">184430</a>
---------	------------------------

Gene Ontology	<a href="#">Hyperlink</a>
---------------	---------------------------

Gene Summary	This intronless gene encodes a member of the SOX (SRY-related HMG-box) family of transcription factors involved in the regulation of embryonic development and in the determination of the cell fate. The encoded protein may act as a transcriptional regulator after forming a protein complex with other proteins, such as syndecan binding protein (syntenin). The protein may function in the apoptosis pathway leading to cell death as well as to tumorigenesis and may mediate downstream effects of parathyroid hormone (PTH) and PTH-related protein (PTHrP) in bone development. The solution structure has been resolved for the HMG-box of a similar mouse protein. [provided by RefSeq]
--------------	---

Other Designations	OTTHUMP00000039358 SRY-related HMG-box gene 4 ecotropic viral integration site 16
--------------------	---