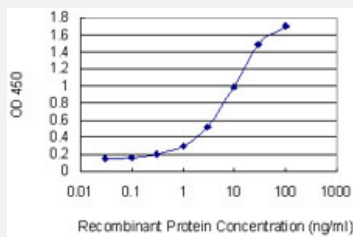


SOS1 monoclonal antibody (M01), clone 4C1

Catalog # H00006654-M01

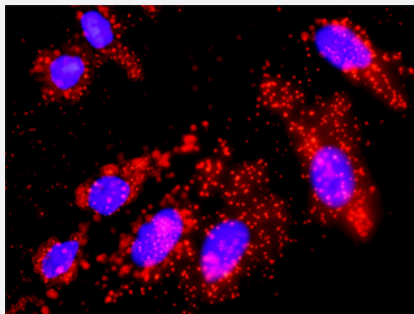
Size 100 ug

Applications



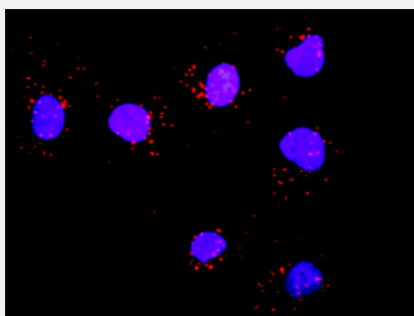
Sandwich ELISA (Recombinant protein)

Detection limit for recombinant GST tagged SOS1 is 0.1 ng/ml as a capture antibody.



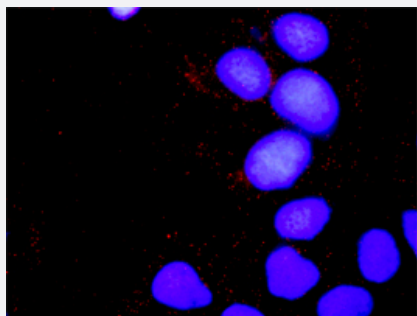
In situ Proximity Ligation Assay (Cell)

Proximity Ligation Analysis of protein-protein interactions between FGFR1 and SOS1. HeLa cells were stained with anti-FGFR1 rabbit purified polyclonal 1:1200 and anti-SOS1 mouse monoclonal antibody 1:50. Each red dot represents the detection of protein-protein interaction complex, and nuclei were counterstained with DAPI (blue).



In situ Proximity Ligation Assay (Cell)

Proximity Ligation Analysis of protein-protein interactions between GAB1 and SOS1. Mahlavu cells were stained with anti-GAB1 rabbit purified polyclonal 1:1200 and anti-SOS1 mouse monoclonal antibody 1:50. Each red dot represents the detection of protein-protein interaction complex, and nuclei were counterstained with DAPI (blue).



In situ Proximity Ligation Assay (Cell)

Proximity Ligation Analysis of protein-protein interactions between CRKL and SOS1. Huh7 cells were stained with anti-CRKL rabbit purified polyclonal 1:1200 and anti-SOS1 mouse monoclonal antibody 1:50. Each red dot represents the detection of protein-protein interaction complex, and nuclei were counterstained with DAPI (blue).

Specification

Product Description	Mouse monoclonal antibody raised against a partial recombinant SOS1.
Immunogen	SOS1 (NP_005624, 313 a.a. ~ 420 a.a) partial recombinant protein with GST tag. MW of the GST tag alone is 26 KDa.
Sequence	SQLSKPGAALYLQSIGEGFKEAVQYVLPRLLLAPVYHCLHYFELLKQLEEKSEDQEDKECLKQAIT ALLNVQSGMEKICKSLAKRRLSESACRFYSQQMKGKQLAIK
Host	Mouse
Reactivity	Human
Interspecies Antigen Sequence	Mouse (99); Rat (98)
Isotype	IgG2a Kappa
Quality Control Testing	Antibody Reactive Against Recombinant Protein.
Storage Buffer	In 1x PBS, pH 7.4
Storage Instruction	Store at -20°C or lower. Aliquot to avoid repeated freezing and thawing.

Applications

- Sandwich ELISA (Recombinant protein)

Detection limit for recombinant GST tagged SOS1 is 0.1 ng/ml as a capture antibody.

[Protocol Download](#)

- ELISA

- *In situ* Proximity Ligation Assay (Cell)

Proximity Ligation Analysis of protein-protein interactions between FGFR1 and SOS1. HeLa cells were stained with anti-FGFR1 rabbit purified polyclonal 1:1200 and anti-SOS1 mouse monoclonal antibody 1:50. Each red dot represents the detection of protein-protein interaction complex, and nuclei were counterstained with DAPI (blue).

- *In situ* Proximity Ligation Assay (Cell)

Proximity Ligation Analysis of protein-protein interactions between GAB1 and SOS1. Mahlavu cells were stained with anti-GAB1 rabbit purified polyclonal 1:1200 and anti-SOS1 mouse monoclonal antibody 1:50. Each red dot represents the detection of protein-protein interaction complex, and nuclei were counterstained with DAPI (blue).

- *In situ* Proximity Ligation Assay (Cell)

Proximity Ligation Analysis of protein-protein interactions between CRKL and SOS1. Huh7 cells were stained with anti-CRKL rabbit purified polyclonal 1:1200 and anti-SOS1 mouse monoclonal antibody 1:50. Each red dot represents the detection of protein-protein interaction complex, and nuclei were counterstained with DAPI (blue).

Gene Info — SOS1

Entrez GeneID [6654](#)

GeneBank Accession# [NM_005633](#)

Protein Accession# [NP_005624](#)

Gene Name SOS1

Gene Alias GF1, GGF1, GINGF, HGF, NS4

Gene Description son of sevenless homolog 1 (Drosophila)

Omim ID [135300 182530 610733](#)

Gene Ontology [Hyperlink](#)

Gene Summary This gene encodes a protein that is a guanine nucleotide exchange factor for RAS proteins, membrane proteins that bind guanine nucleotides and participate in signal transduction pathways. GTP binding activates and GTP hydrolysis inactivates RAS proteins. The product of this gene may regulate RAS proteins by facilitating the exchange of GTP for GDP. Mutations in this gene are associated with gingival fibromatosis 1 and Noonan syndrome type 4. [provided by RefSeq]

Other Designations OTTHUMP00000128306|gingival fibromatosis, hereditary, 1|guanine nucleotide exchange factor|son of sevenless homolog 1

Pathway

- [Acute myeloid leukemia](#)

- [B cell receptor signaling pathway](#)
- [Chemokine signaling pathway](#)
- [Chronic myeloid leukemia](#)
- [Colorectal cancer](#)
- [Dorso-ventral axis formation](#)
- [Endometrial cancer](#)
- [ErbB signaling pathway](#)
- [Fc epsilon RI signaling pathway](#)
- [Focal adhesion](#)
- [Gap junction](#)
- [Glioma](#)
- [GnRH signaling pathway](#)
- [Insulin signaling pathway](#)
- [Jak-STAT signaling pathway](#)
- [MAPK signaling pathway](#)
- [Natural killer cell mediated cytotoxicity](#)
- [Neurotrophin signaling pathway](#)
- [Non-small cell lung cancer](#)
- [Pathways in cancer](#)
- [Prostate cancer](#)
- [Regulation of actin cytoskeleton](#)
- [Renal cell carcinoma](#)
- [T cell receptor signaling pathway](#)

Disease

- [Abnormalities](#)

- [Angina Pectoris](#)
- [Articulation Disorders](#)
- [Cardiovascular Diseases](#)
- [Cognition](#)
- [Cognition Disorders](#)
- [Coronary Vasospasm](#)
- [Craniofacial Abnormalities](#)
- [Developmental Disabilities](#)
- [Diabetes Mellitus](#)
- [Dyslexia](#)
- [Ectodermal Dysplasia](#)
- [Edema](#)
- [Genetic Predisposition to Disease](#)
- [Glioma](#)
- [Hearing](#)
- [Hearing Loss](#)
- [Heart Defects](#)
- [Language Disorders](#)
- [LEOPARD Syndrome](#)
- [Leukemia](#)
- [Memory](#)
- [Motor Skills](#)
- [Motor Skills Disorders](#)
- [Neuropsychological Tests](#)
- [Noonan Syndrome](#)
- [Skin Abnormalities](#)

- [Syndrome](#)
- [Tobacco Use Disorder](#)