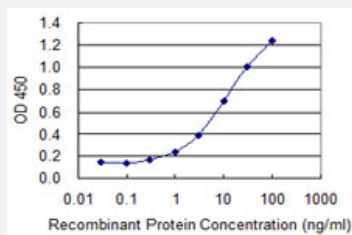


# SOLH monoclonal antibody (M09), clone 2H7

Catalog # H00006650-M09

Size 100 ug

## Applications



### Sandwich ELISA (Recombinant protein)

Detection limit for recombinant GST tagged SOLH is 0.1 ng/ml as a capture antibody.

## Specification

<b>Product Description</b>	Mouse monoclonal antibody raised against a partial recombinant SOLH.
<b>Immunogen</b>	SOLH (NP_005623, 993 a.a. ~ 1086 a.a) partial recombinant protein with GST tag. MW of the GST tag alone is 26 KDa.
<b>Sequence</b>	HPKAYLHVQCDCTDSFNVVSTRGSLRTQDSVPPLHRQVLVILSQLEGNAGFSITHRLAHRKAAQA FLSDWTASKGTHSPPLTPEVAGLHGPRPL
<b>Host</b>	Mouse
<b>Reactivity</b>	Human
<b>Interspecies Antigen Sequence</b>	Mouse (97); Rat (97)
<b>Isotype</b>	IgG2a Kappa
<b>Quality Control Testing</b>	Antibody Reactive Against Recombinant Protein.
<b>Storage Buffer</b>	In 1x PBS, pH 7.4
<b>Storage Instruction</b>	Store at -20°C or lower. Aliquot to avoid repeated freezing and thawing.

## Applications

- Sandwich ELISA (Recombinant protein)

Detection limit for recombinant GST tagged SOLH is 0.1 ng/ml as a capture antibody.

[Protocol Download](#)

- ELISA

## Gene Info — SOLH

Entrez GeneID	<a href="#">6650</a>
GeneBank Accession#	<a href="#">NM_005632</a>
Protein Accession#	<a href="#">NP_005623</a>
Gene Name	SOLH
Gene Alias	CAPN15, MGC131491
Gene Description	small optic lobes homolog (Drosophila)
Omim ID	<a href="#">603267</a>
Gene Ontology	<a href="#">Hyperlink</a>
Gene Summary	This gene encodes a protein containing zinc-finger-like repeats and a calpain-like protease domain. The encoded protein may function as a transcription factor, RNA-binding protein, or in protein-protein interactions during visual system development. [provided by RefSeq]
Other Designations	small optic lobes