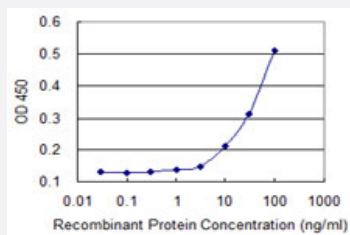


# SOLH monoclonal antibody (M05), clone 4E2

Catalog # H00006650-M05

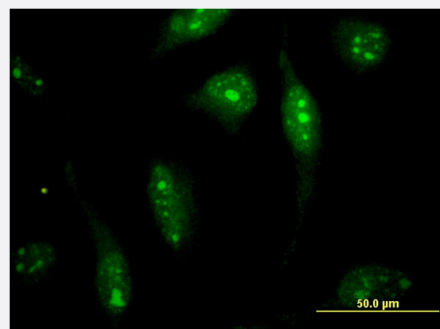
Size 100 ug

## Applications



### Sandwich ELISA (Recombinant protein)

Detection limit for recombinant GST tagged SOLH is 3 ng/ml as a capture antibody.



### Immunofluorescence

Immunofluorescence of monoclonal antibody to SOLH on HeLa cell . [antibody concentration 10 ug/ml]

## Specification

### Product Description

Mouse monoclonal antibody raised against a partial recombinant SOLH.

### Immunogen

SOLH (NP\_005623, 993 a.a. ~ 1086 a.a) partial recombinant protein with GST tag. MW of the GST tag alone is 26 KDa.

### Sequence

HPKAYLHVQCDCDTSFNVVSTRGSLRTQDSVPPLHRQVLVILSQLEGNAGFSITHRLAHRKAAQA  
FLSDWTASKGTHSPPLTPEVAGLHGPRPL

### Host

Mouse

### Reactivity

Human

**Interspecies Antigen Sequence**

Mouse (97); Rat (97)

**Isotype**

IgG2a Kappa

**Quality Control Testing**

Antibody Reactive Against Recombinant Protein.

**Storage Buffer**

In 1x PBS, pH 7.4

**Storage Instruction**

Store at -20°C or lower. Aliquot to avoid repeated freezing and thawing.

## Applications

- Sandwich ELISA (Recombinant protein)

Detection limit for recombinant GST tagged SOLH is 3 ng/ml as a capture antibody.

[Protocol Download](#)

- ELISA

- Immunofluorescence

Immunofluorescence of monoclonal antibody to SOLH on HeLa cell . [antibody concentration 10 ug/ml]

## Gene Info — SOLH

**Entrez GeneID**[6650](#)**GeneBank Accession#**[NM\\_005632](#)**Protein Accession#**[NP\\_005623](#)**Gene Name**

SOLH

**Gene Alias**

CAPN15, MGC131491

**Gene Description**

small optic lobes homolog (Drosophila)

**Omim ID**[603267](#)**Gene Ontology**[Hyperlink](#)**Gene Summary**

This gene encodes a protein containing zinc-finger-like repeats and a calpain-like protease domain. The encoded protein may function as a transcription factor, RNA-binding protein, or in protein-protein interactions during visual system development. [provided by RefSeq]

Other Designations

small optic lobes

---